

DEPARTMENT OF THE ARMY TECHNICAL MANUAL
OPERATOR'S, ORGANIZATIONAL, DS AND GS MAINTENANCE
REPAIR PARTS AND SPECIAL TOOLS LISTS

RIFLE, CALIBER .22: REMINGTON, MODEL 40X-H1,
W/E (MATCH GRADE) (1005-694-4123)

RIFLE, CALIBER .22: WINCHESTER, MODEL 52D,
W/E (MATCH GRADE) (1005-999-1187)

RIFLE, CALIBER .22: MOSSBERG, MODEL 144US,
W/E (TRAINING GRADE) (1005-183-5957)

RIFLE, CALIBER .22: REMINGTON, MODEL 513-T,
W/E (TRAINING GRADE) (1005-840-3758)

RIFLE, CALIBER .30: WINCHESTER, MODEL 70,
CHAMBERED FOR 30-06, W/E (MATCH GRADE) (1005-322-9736)

RIFLE, CALIBER .30: WINCHESTER, MODEL 70,
CHAMBERED FOR .300 H AND H MAGNUM,
W/E (MATCH GRADE) (1005-694-4257)

HEADQUARTERS, DEPARTMENT OF THE ARMY
SEPTEMBER 1971

*This manual contains copyright material reproduced by permission of:
Remington Arms Co, Inc.,
(Figures 1,4 7, 8, 9, 10, 11, 21, 22, 23, and 24)*

*Olin- Mathieson Chemical Corp.,
Winchester-Western Division
(Figures 2, 5, 6, 12, 13, 14, 15, 16, 25, 26, 27, 28, and 29)*

*O. F. Mossberg and Sons Inc.,
(Figures 3, 17, 18, 19, and 20)*

Technical Manual
No. 9-1005-206-14P/4



HEADQUARTERS
DEPARTMENT OF THE ARMY
Washington, D. C., 28 September 1971

OPERATOR'S ORGANIZATIONAL, DS, AND GS, MAINTENANCE

REPAIR PARTS AND SPECIAL TOOLS LISTS

**RIFLE, CALIBER .22: REMINGTON,
MODEL 40X-H1, W/E (MATCH GRADE)**

**RIFLE, CALIBER .22: WINCHESTER,
MODEL 52D, W/E (MATCH GRADE)**

**RIFLE, CALIBER .22: MOSSBERG,
MODEL 144US, W/E (TRAINING GRADE)**

**RIFLE, CALIBER .22: REMINGTON
MODEL 513-T, W/E (TRAINING GRADE)**

**RIFLE, CALIBER .30: WINCHESTER,
MODEL 70, CHAMBERED FOR 30-06, W/E (MATCH GRADE)**

**RIFLE, CALIBER .30: WINCHESTER,
MODEL 70 CHAMBERED FOR .300 H AND H MAGNUM, W/E (MATCH GRADE)**

*This manual supersedes TM 9-1005-206-14P/4, 9 July 1963, including changes.

This manual is current as of 27 August 1971

Section I	INTRODUCTION	3	
Section II	REPAIR PARTS LIST	9	
Section III	SPECIAL TOOLS LIST	13	
Section IV	REPAIR PARTS LIST	14	
	Caliber 22 Remington Rifle, Model 40X-H1 (Match Grade)	14	
	Major assemblies and groups	14	7
	Bolt assembly	14	8
	Barrel and receiver group	14	9
	Trigger and bolt stop group	15	10
	Stock assembly	15	11
	Caliber 22 Winchester Rifle, Model 52D (Match Grade)	16	
	Major assemblies and groups	16	12
	Breech bolt assembly	16	13
	Barrel and receiver group	17	14
	Trigger housing assembly	17	15
	Stock group	18	16
	Caliber .22 Mossberg Rifle, Model 144US (Training Grade)	19	
	Major assemblies & Ad groups	19	17
	Bolt assembly	19	18
	Stock group	19	19
	Receiver, barrel and trigger group	20	20
	Caliber 22 Remington Rifle, Model 513-T (Training Grade)	21	
	Major assemblies and groups	21	21
	Bolt assembly	21	22
	Barrel, receiver and trigger group	21	23
	Stock assembly	22	24
	Caliber .30 Winchester Rifle, Model 70, Chambered or 30-06 aid .300 H and H. Magnum (Match Grade)	23	
	Major assemblies and group	23	25
	Breech bolt assembly	23	26
	Barrel end receiver group	24	27
	Trigger and sear group	24	28
	Stock	25	29
Section V.	Special Tools List	26	30,31,32
Section VI	Federal Stock Number and Reference Number Index	39	

SECTION I INTRODUCTION

1. Scope

This manual lists repair parts, special tools, and support equipment required for the performance of organizational, direct

support and general support maintenance of commercial rifles. See figures 1 through 6.

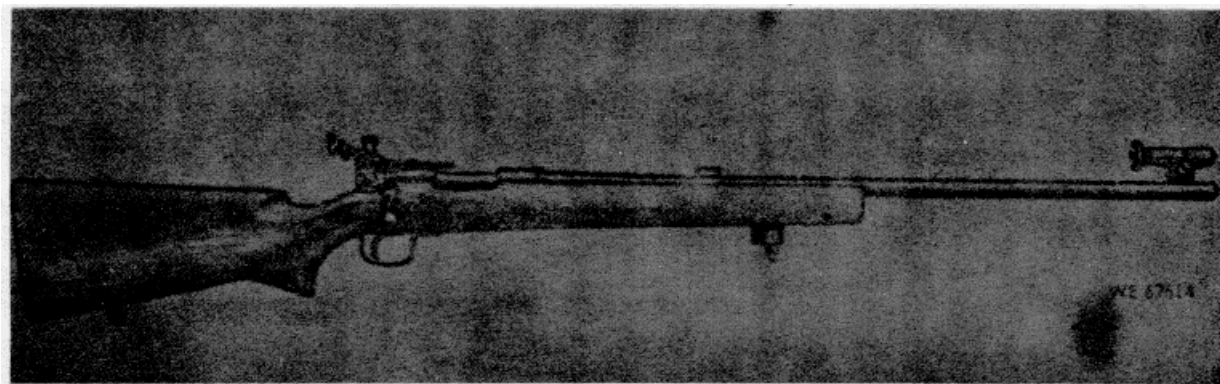


Figure 1. Caliber .22, Remington Rifle, Model 40X-H1, (Match Grade)

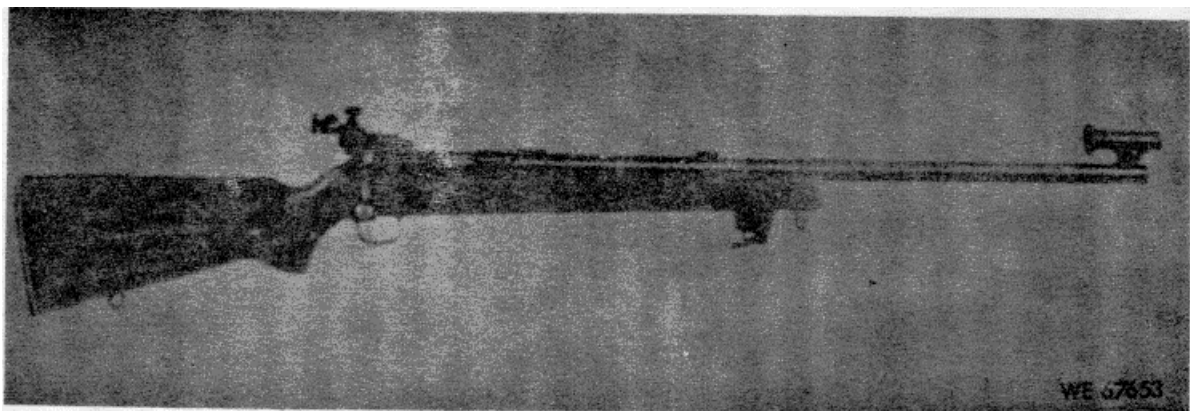


Figure 2. Caliber .22, Winchester Rifle, Model 52D, (Match Grade)

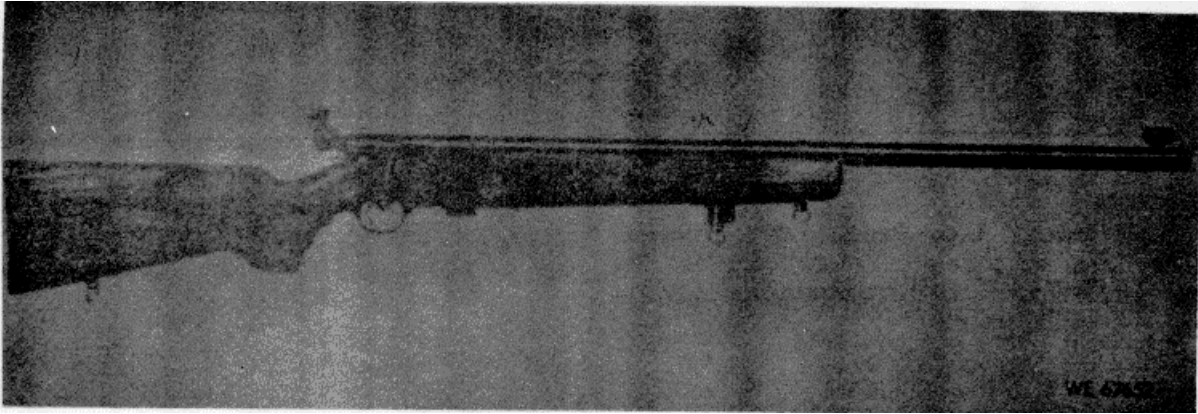


Figure 3. Caliber .22, Mossberg Rifle, Model 144US (Training Grade)

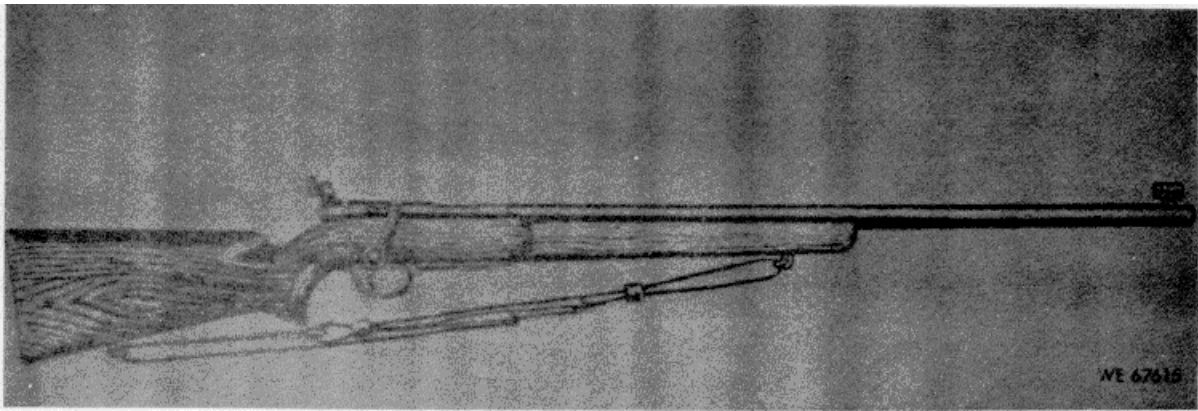


Figure 4. Caliber .22, Remington Rifle, Model 513-T (Training Grade)

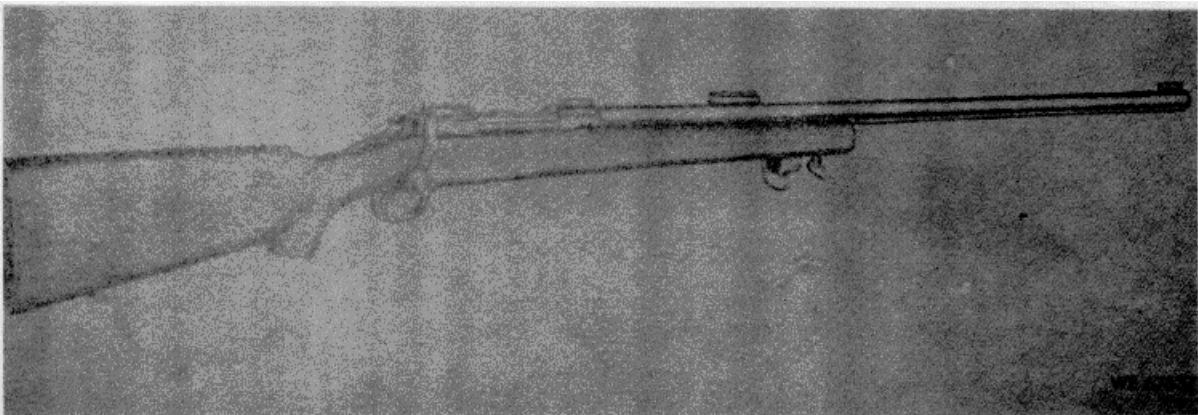


Figure 5. Caliber .30 , Winchester Rifle, Model 70, chambered for 30-06 (Match Grade)

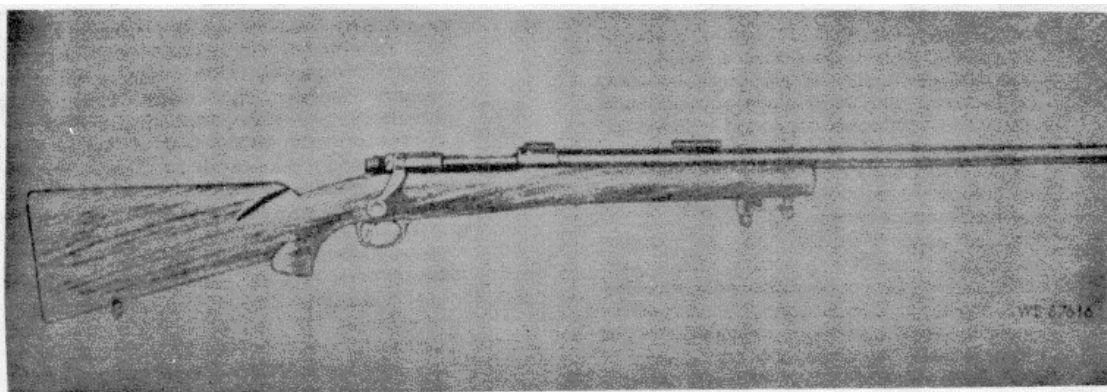


Figure 6. Caliber .30, Winchester Rifle, Model 70, chambered for .300 H and H Magnum (Match Grade)

2. General

This Repair Parts and Special Tools List is divided into the following sections:

a. *Basic Issue Items List*. Not applicable.

b. *Items Troop Installed or Authorized List*. Not applicable.

c. *Repair Parts - Section II*. A list of Repair Parts authorized at the organizational level for the performance of maintenance. It also includes parts which must be removed for replacement of the authorized parts. Parts lists are composed of functional groups in ascending numerical sequence, with the parts in each group listed in figure and item number sequence.

d. *Special Tools List - Section III*. A list of special tools, test and support equipment authorized for the performance of maintenance at the organizational level.

e. *Repair Parts List - Section IV*. A list of repair parts authorized at the direct support and general support levels for the performance of maintenance. The list also includes parts which must be removed for the replacement of the authorized parts. Parts lists are composed of functional groups in ascending numerical sequence, with parts in each group listed in figure and item number sequence.

f. *Special Tools List - Section V*. A list of special tools, test and support equipment authorized for the performance of maintenance at the direct support and general support levels.

g. *Federal Stock Number and Reference Number Index - Section VI*. A list, in ascending numerical sequence, of all Fed-

eral stock numbers appearing in the listings, followed by a list, in alpha-meric sequence, of all reference numbers appearing in the listings. Federal stock number and reference numbers are crossreferenced to each illustration figure and item number appearance.

3. Explanation of Columns

The following provides an explanation of columns found in the tabular listings.

a. *Source, Maintenance and Recoverability Codes (SMR)*.

(1) *Source Code*. Indicates the source for the listed item. Source codes are.

Code	Explanation
P	Repair parts, special tools and test equipment supplied from the GSA/DSA, or Army supply system, and authorized for use at indicated maintenance categories.
P2	Repair parts, special tools and test equipment which are procured and stocked for insurance purposes because the combat or military essentially of the end item dictates that a minimum quantity be available in the supply system
P9	Assigned to items which are NSA design controlled- unique repair parts, special tools, test, measuring, and diagnostic equipment which are stocked and supplied by the Army COMSEC Logistic System and which are not subject to the provisions of AR 380-41.
PI0	Assigned to items which are NSA design controlled special tools, test, manufacturing and diagnostic equipment for COMSEC support which are accountable under the provisions of AR 380-41, and which are stocked and supplied by the Army COMSEC Logistic System

- M Repair Parts, special tools and test equipment which are not procured or stocked as such in the supply system out are to be manufactured at Indicated maintenance levels.
- A Assemblies which are not procured or stocked as such but are made up of two or more units. Such component units carry individual stock numbers and descriptions, are procured and stocked separately, and can be assembled to form the required assembly at indicated maintenance categories.
- X Parts and assemblies that are not procured or stocked because the failure rate is normally below that of the applicable end item or component The failure of such part or assembly should result in retirement of the end item from the supply system.
- X1 Repair parts which are not procured or stocked. The requirement for such items will be filled by the next higher assembly or component.
- X2 Repair Parts, special tools and test equipment which are not stocked and have no foreseen mortality The indicated maintenance category requiring such repair parts will attempt to obtain the parts through cannibalization or salvage The item may be requisitioned, with exception data, from 'se end item manager for immediate use
- G Major assemblies that are procured with PEMA funds for initial Issue only as exchange assemblies at DS GS level These assemblies will not be stocked above DS and GS level or returned to depot supply level
- R Repair parts (assemblies and components), special tools and test equipment which are considered economically repairable at direct and general support maintenance levels. When the item is no longer economically repairable, it is normally disposed of at the GS level. When supply considerations dictate, some of these repair parts may be listed for automatic return to supply for depot level repair as set forth in AR 710-50. When so listed, they will be replaced by supply on exchange basis.
- S Repair Parts, special tools and test equipment, and assemblies which are economically repairable at DS and GS activities and which normally are furnished by supply on an exchange basis. When items are determined by a GSU to be uneconomically repairable, they will be evacuated to a depot for evaluation and analysis before final disposition.
- T High dollar value recoverable repair parts, special tools and test equipment which are subject to special handling and are issued on an exchange basis. Such items will be repaired or overhauled at depot maintenance activities only. No repair maybe accomplished at lower levels.
- U Repair parts, special tools and test equipment specifically selected for salvage by reclamation units because of precious metal content, critical materials, high dollar value or reusable casings or castings

NOTE

Cannibalization or salvage may be used as a source of supply for any items source coded above except those coded XI and aircraft support items as restricted by AR 700-42.

(2) Maintenance Code. Indicates the lowest category of maintenance authorized to install the repair part and/or use the special tool or test equipment for each application. Capabilities of higher maintenance categories are considered equal or better. Maintenance codes are:

Code	Explanation
C	Crew/operator
O	Organizational maintenance
F	Direct support maintenance
H	General support maintenance
D	Depot maintenance

(3) Recoverability Code. Indicates whether unserviceable should be returned for recovery or salvage. Items not coded are nonrecoverable Recoverabilty codes are:

b. *Federal Stock Number* Indicates the Federal stock number assigned to the item and will be used for requisitioning purposes,

Description Indicates the Federal item name and a minimum description required to identify the item. The last line indicates the reference number followed by the applicable Federal Supply Code for Manufacturer (FSCM) in parentheses. The FSCM is used as an element in item identification-to designate manufacturer or distributor or Government agency, etc., and is identified in SB 708-42. Items that are included in kits and sets are listed below the name of the kit or set with quantity of each item in the kit or set indicated in front of the item name.

d. *Unit of Measure (U/M)*. Indicates the standard or basic quantity by which the listed item is used in performing the actual maintenance function. This measure is expressed by a two-character alphabetical abbreviation, e.g., ea, in, pr, etc., and is the basis used to indicate quantities and allowances in subsequent columns. When the unit of measure differs from the unit of issue, the lowest unit of issue that will satisfy the required units of

measure will be requisitioned.

e. *Quantify Incorporated in Unit.* Indicates the quantity of the item used in the breakout shown on the illustration figure, which is prepared for a functional group, subfunctional groups, or an assembly. A "V" appearing in this column in lieu of a quantity indicates that no specific quantity is applicable, e.g., shims, spacers, etc.

f. *15-Day Organizational Maintenance Allowances.*

(1) The allowance columns are divided into four subcolumns. Items authorized for use are identified with an asterisk in the allowance column opposite the first appearance of each item. Subsequent appearances have the letters "REF" in the allowance columns.

(2) Subsequent changes to allowance lists will be accomplished in accordance with AR 735-35. In addition the major commands will be authorized to approve reductions in stockage allowances (range and quantity). If additional items are considered necessary, recommendations should be forwarded to Commanding General, U.S. Army Weapons Command, ATTN: AMSWE-MAP, Rock Island, Illinois 61201, for exception or revision to the allowance list.

g. *30-Day DS/CS Maintenance Allowances.*

NOTE

Allowances in GS Column are for GS Maintenance only.

The allowance columns are divided into three subcolumns. Items authorized for use are identified with an asterisk in the allowance column opposite the first appearance of each item. Subsequent appearances of the same item will have the letters "REF" in the applicable allowance columns.

h. *1-Year Allowances per 100 equipments/Contingency Planning Purposes.* This column indicates opposite the first appearance of each item the authorization for distribution and contingency planning purposes. The range of items indicates the authorization of all items required to provide for adequate support of 100 equipments for one year. Subsequent appearances of the same item will have the letters "REF" in this column.

i. *Depot Maintenance Allowance Per 100 Equipments.* Not applicable.

j. *Illustration.* This column is divided as follows.

(1) *Figure Number.* Indicates the figure number of the illustration in which the item is shown.

(2) *Item Number.* Indicates the callout number used to reference the item on the illustration.

4. Special Information

a. Usable on codes are included in Column 3. Uncoded items are applicable to all models. Identification of the usable on codes used in this publication are:

Code	Used on
A	Rifle, Caliber 22 Mossberg, Model 144US, W/E (Training Grade) (8448219)
B	Rifle, Caliber 22 Remington, Model 40X-H1, W/E (Match Grade) (8410869)
C	Rifle, Caliber 22 Remington, Model 113-T, W/E (Training Grade) (8403758)
D	Rifle, Caliber .22 Winchester, Model 1 52D, W/E (Match Grade) (8430268)
E	Rifle, Caliber 30 Winchester, Model 70, Chambered for 30-06, W/E (Match Grade) (8415166)
	Rifle, Caliber 30 Winchester, Model 70, Chambered for .300 H and H Magnum, W/E (Match Grade) (8410870)
F	Rifle, Caliber 30 Winchester, Model 70, Chambered for 30-06, W/E (Match Grade) (8415166)
G	Rifle, Caliber 30 Winchester, Model 70, Chambered for 300 H and H Magnum, W/E (Match Grade) (8410870)
H	Rifle, Caliber .22 Mossberg, Model 144US, W/E (Training Grade) (8448219)
	Rifle, Caliber .22 Remington, Model 40X-HI, W/E (Match Grade) (8410869)
	Rifle, Caliber 22 Remington, Model 513-T, W/E (Training Grade) (8403758)
	Rifle, Caliber 22 Winchester, Model 52D, W/E (Match Grade) (8430268)
J	Rifle, Caliber 22 Mossberg, Model 144US, W/E (Training Grade) (8448219)
	Rifle, Caliber .22 Remington, Model 513-T, W/E (Training Grade) (8403758)
K	Rifle, Caliber 22 Remington, Model 40X-HI, W/E (Match Grade) (8410869)
	Rifle, Caliber 22 Winchester, Model 52D, W/E (Match Grade) (8430268)
	Rifle, Caliber 30 Winchester, Model 70, Chambered for 30-06, W/E (Match Grade) (8415166)
	Rifle, Caliber 30 Winchester, Model 70, Chambered for .300 H and H Magnum, W/E (Match Grade) (8410870)
L	Rifle, Caliber .22 Remington, Model 40X-HI, W/E (Match Grade) (8410869)
	Rifle, Caliber 22 Winchester, Model 52D, W/E (Match Grade) (8430268)

- M Rifle, Caliber .2: Winchester, Model 52D1), W/E (Match Grade) (8430268)
- Rifle, Caliber .22. Remington, Model 513-T. W/E (Training Grade) (8403758)
- Rifle, Caliber .22: Remington, Model 40X-H1, W/E (Match Grade) (8410859)

b. Action change codes indicated in the left-hand margin of the listing page denote the following:

N - Indicates an added item.

C - Indicates a change in data.

R - Indicates a change in FSN only.

c. The following maintenance supplies and materials are recommended for these rifles. Pertinent authorized documents are the proper requisitioning authority for these maintenance expendable supplies and materials.

FSN	Nomenclature
1005-288-3565	SWAB, SMALL ARMS CLEANING: 2-1/2 SQ (1000 PER PG)
1005-912-4248	SWAB, SMALL ARMS CLEANING: 1-1/4 SQ (1000 PER PG)
6850-24-6657	CLEANING COMPOUND, RIFLE BORE: (RBC) 8 OZ CAN
6850-281-1985	DRY CLEANING, SOLVENT: (SD) (1 GAL CAN)
9150-273-239	LUBRICATING OIL, GENERAL PURPOSE: (PL SPECIAL) 4 OZ CAN

5. How to Locate Repair Parts

a. When Federal stock number or reference number is unknown:

(1) *First* Using the table of contents determine the functional group within which the repair part belongs. This is necessary since illustrations are prepared for functional groups and listings are divided into the same groups.

(2) *Second*. Find the illustration covering the functional group to which the repair part belongs.

(3) *Third*. Identify the repair part on

the illustration and note the illustration figure and item number of the repair part.

(4) *Fourth*. Using the Repair Parts Listings, find the functional group to which the repair part belongs and locate the illustration figure. and item number noted on the illustration.

b. When Federal stock number or reference number is known:

(1) *First*. Using the Index of Federal Stock Numbers and Reference Numbers find the pertinent Federal stock number or reference number. This index is in ascending FSN sequence followed by a list of reference numbers in ascending alphanumeric sequence, cross-referenced to the illustration figure number and item number.

(2) *Second*. Using the Repair Part Listing, find the functional group of the repair part and the illustration figure number and item number referenced in the Index of Federal Stock Numbers and Reference Numbers.

6. Abbreviations

Not applicable.

7. Recommendations for Maintenance

Publication Improvements

You can improve this manual by calling attention to errors and by recommending improvements, using DA Form 202 (Recommended Changes to Publications) or by a letter, and mailing directly to Commanding General, U.S. Army Weapons Command, ATTN: AMSWE-MAP, Rock Island, Illinois 61201.

**SECTION II.
REPAIR PARTS LIST**

(1) SMR CODE (A) (B) (C)	(2) FEDERAL STOCK NUMBER	(3) DESCRIPTION REF NUMBER & MFR CODE	(4) USABLE ON CODE	(5) UNIT OF MEAS	(6) QTY INC IN UNIT	(6) 15-DAY ORGANIZATIONAL MAINTENANCE ALW				(7) ILLUS- TRATION	
						(a)	(b)	(c)	(d)	(a)	(b)
						1-5	6-20	21-50	51-100	FIG. NO.	ITEM NO.
		REPAIR PARTS FOR: CALIBER .22 REMINGTON RIFLE, MODEL 40X-H1 (MATCH GRADE) MAJOR ASSEMBLIES AND GROUPS									
P O	1005-887-8967	SCREW, FRONT GUARD: 22037 (50446)	B	EA	1	*	*	*	*	7	3
P O	1005-887-5802	SCREW, CENTER GUARD: 17580 (50446)	B	EA	1	*	*	*	*	7	4
P O	1005-887-8966	SCREW, REAR GUARD: 22036 (50446)	B	EA	2	*	*	*	*	7	5
		REPAIR PARTS FOR: CALIBER .22 WINCHESTER RIFLE MODEL 52D (MATCH GRADE) MAJOR ASSEMBLIES AND GROUPS									
C P O	1005-970-8603	SCREW, TANG: 6752D (66118)	D	EA	1	*	*	*	*	12	2
C P O	1005-970-8602	NUT, TANG SCREW: 6852D (66118)	D	EA	1	*	*	*	*	12	3
C P O	1005-970-8600	SCREW, STOCK: 5752D (66118)	D	EA	1	*	*	*	*	12	4
		BREECH BOLT ASSEMBLY									
C P O	1005-970-8633	PIN, EXTRACTOR: 285CD (66118)	D	EA	2	*	*	*	*	13	6
C P O	1005-970-8631	EXTRACTOR, RIGHT HAND: 2652CD (66118)	D	EA	1	*	*	*	*	13	7
C P O	1005-970-8632	EXTRACTOR, LEFT HAND: 2752CD(66118)	D	EA	1	*	*	*	*	13	9
		STOCK GROUP									
C P O	1005-970-8611	SCREW, BUTT PLATE: 9112 (66118)	D	EA	2	*	*	*	*	16	2
C P O	1005-970-8593	PLATE, BUTT 1952D (66118)	D	EA	1	*	*	*	*	16	3
C P O	1005-970-8594	SCREW, GUARD: 3752D (66118)	D	EA	1	*	*	*	*	16	5
C P O	1005-970-8595	GUARD: TRIGGER 3652D (66118)	D	EA	1	*	*	*	*	16	6
C P O	1005-971-1588	LEVER, CLAMP: 2352D (66118)	D	EA	1	*	*	*	*	16	7
C P O	1005-972-0195	SWIVEL, FOREARM: 3552D (6118)	D	EA	1	*	*	*	*	16	8
C P O	1005-971-1590	STOP, HAND: 3852D (66118)	D	EA	1	*	*	*	*	16	9
C P O	1005-971-1589	SCREW, CLAMP: 2452D (66118)	D	EA	1	*	*	*	*	16	10

(1) SMR CODE (A) (B) (C)	(2) FEDERAL STOCK NUMBER	(3) DESCRIPTION REF NUMBER & MFR CODE	(4) UNIT OF MEAS	(5) QTY INC IN UNIT	(6) 15-DAY ORGANIZATIONAL MAINTENANCE ALW				(7) ILLUS- TRATION	
					(a)	(b)	(c)	(d)	(a)	(b)
					1-5	6-20	21-50	51-100	FIG. NO.	ITEM NO.
C P O	1005-971-1592	SCREW, INSULATOR 4452D (66118)	D EA	1	*	*	*	*	16	11
C P O	1005-971-1591	INSULATOR: 4352d (66118)	D EA	1	*	*	*	*	16	1
C P O	1005-971-1587	SCREW, CHANNEL 2252D (66118)	D EA	2	*	*	*	*	16	13
C P O	1005-971-1584	PLUNGER, BEDDING SCREW: 752D (66118)	D EA	2	*	*	*	*	16	16
C P O	1005-971-1585	SPRING, BEDDING SCREW PLUNGER 852D (66118)	D EA	2	*	*	*	*	16	17
C P O	1005-971-1581	SCREW, BEDDING 452D (66118)	D EA	2	*	*	*	*	16	18
C P O	1005-971-1583	HOLDER, BEDDING SCREW: 652D (66118)	D EA	1	*	*	*	*	16	19
C P O	1005-970-8601	BUSHING, STOCK SCREW 5852D (66118)	D EA	1	*	*	*	*	16	21
REPAIR PARTS FOR: CALIBER 22 MOSSBREG RIFLE MODEL 144US (TRAINING GRADE) MAJOR ASSEMBLIES AND GROUPS										
N P O	1005-457-0525	MAGAZINE, CARTRIDGE 7 CARTRIDGE CAPACITY 144US632 (41758)	A EA	1	*	*	*	*	17	1
N P O	5305-462-8639	SCREW, TAKEDOWN PFST, BARREL AND RECEIVER ASSEMBLY 144US503 (41758)	A EA	1	*	*	*	*	19	1
N P O	5305-462-8641	SCREW, SWIVEL FORE END, GUN 144US2952 (41758)	A EA	1	*	*	*	*	19	2
N P O	1005-457-0534	SWIVEL, SMALL ARMS SLING 144US2344 (41758)	A EA	1	*	*	*	*	19	3
N P O	5305-404-7487	SCREW, SWIVEL 144US2339 (41758)	A EA	2	*	*	*	*	19	4
N P O	1005-457-0535	STOP, FORE END, GUN: 144US2335 (41758)	A EA	1	*	*	*	*	19	5
N P O	5305-462-2990	SCREW, TRIGGER GUARD REAR 144US147 (41758)	A EA	1	*	*	*	*	19	8
N P O	1005-457-0533	PLATE, FORE END, GUN. 144US2336 (41758)	A EA	1	*	*	*	*	19	7
N P O	5310-464-4786	NUT, STOP 144US2965 (41758)	A EA	1	*	*	*	*	19	8
N P O	5305-462-2988	SCREW, TRIGGER GUARD: FRONT 144US146 (41758)	A EA	1	*	*	*	*	19	9
N P O	1005-457-0528	PLATE, MAGAZINE STOCK: 144US1191 (41758)	A EA	1	*	*	*	*	19	10
N P O	1005-457-0511	GUARD, TRIGGER 144US145 (41758)	A EA	1	*	*	*	*	19	11
N P O	5305-462-8638	SCREW, SWIVEL: STOCK: SHOULDER GUN 144US171 (41758)	A EA	1	*	*	*	*	19	12
N P O	5305-462-2982	SCREW, BUTT PLATE: STOCK, SHOULDER GUN 144US112 (4175q)	A EA	2	*	*	*	*	19	13
N P O	1005-457-0527	PLATE, BUTT, SHOULDER GUN STOCK 144US870 (41758)	A EA	1	*	*	*	*	19	14
N P O	1005-457-057	BUTTON, SAFETY: GREEN 144US139 (41758)	A EA	1	*	*	*	*	19	15
N P O	1005-457-0506	BUTTON, SAFETY: 144US138 (41758)	A EA	1	*	*	*	*	19	16

(1)	(2)	(3)	(4)	(5)	(6)				(7)		
					15-DAY ORGANIZATIONAL MAINTENANCE ALW				ILLUSTRATION		
					(a)	(b)	(c)	(d)	(a)	(b)	
SMR CODE (A) (B) (C)	FEDERAL STOCK NUMBER	DESCRIPTION REF NUMBER & MFR CODE	USABLE ON CODE	UNIT OF MEAS	QTY INC IN UNIT	1-5	6-20	21-50	51-100	FIG. NO.	ITEM NO.
N P C	5305-462-2993	RECEIVER, BARREL AND TRIGGER GROUP SCREW, BRACKET ANGLE BAR AND ADJUSTING TRIGGER 144US626 (41758)		EA	1	*	*	*	*	20	1
N P C	1005-457-0515	LATCH, MAGAZINE: 144US564 (41758)	A	EA	1	*	*	*	*	20	2
N P C	1005-457-0521	BRACKET, ANGLE, BAR AND ADJUSTING TRIGGER 144US574 (41758)	A	EA	1	*	*	*	*	20	3
N P C	1005-457-0512	PLUNGER, TRIGGER SPRING 144US150 (41758)	A	EA	1	*	*	*	*	20	8
N P C	5305-462-2983	SCREW, SAFETY 144US137 (41758)	A	EA	2	*	*	*	*	20	10
N P C	1005-457-0524	BRACKET, TRIGGER GUARD BARREL AND RECEIVER ASSEMBLY 144US579 (41758)	A	EA	1	*	*	*	*	20	12
N P C	1005-457-0510	POST TAKEDOWN BARREL AND RECEIVER ASSEMBLY 144US143 (41758)	A	EA	1	*	*	*	*	20	13
N P C	1005-457-0537	BAND, BARREL FRONT SWIVEL 144US3016 (41758)	A	EA	1	*	*	*	*	20	15
		REPAIR PARTS FOR: CALIBER .22 REMINGTON, RIFLE, MODEL 513-T (TRAINING GRADE) MAJOR ASSEMBLIES AND GROUPS									
P C	1005-731-0870	MAGAZINE ASSEMBLY 1010 (50446)	C	EA	1	*	*	*	*	21	1
P C	5305-368-9663	SCREW, TAKEDOWN 393 (50446)	C	EA	1	*	*	*	*	21	4
		BARREL, RECEIVER AND TRIGGER GROUP									
P C	1005-049-9416	PIN, TRIGGER 98 (50446)	C	EA	1	*	*	*	*	23	1
P C	1005-532-3101	SCREW, TRIGGER CUSHION SPRING 492 (50446)	C	EA	2	*	*	*	*	23	4
P C	1005-344-5913	SCREW, ADJUSTING: TRIGGER CUSHION SPRING 493 (50446)	C	EA	2	*	*	*	*	23	5
P C	1005-731-0857	SPRING, TRIGGER CUSHION 491 (50446)	C	EA	1	*	*	*	*	23	6
P C	1005-731-0821	PLUNGER, TRIGGER SPRING 438 (50446)	C	EA	1	*	*	*	*	23	7
P C	1005-874-8693	SPRING, TRIGGER 16360 (50446)	C	EA	1	*	*	*	*	23	8
P C	1005-573-8738	PIN, TRIGGER TAKE-UP 12 (50446)	C	EA	1	*	*	*	*	23	10
C P C	1005-532-3086	STOCK ASSEMBLY SCREW, BUTT PLATE: 25410 (50446)	C	EA	2	*	*	*	*	24	1
P C	1005-731-0815	PLATE, BUTT. 308 (50446)	C	EA	1	*	*	*	*	24	2
C P C	1005-049-9420	SCREW, TRIGGER GUARD 17577 (50446)	C	EA	3	*	*	*	*	24	4
P C	1005-731-0816	PLATE, MAGAZINE GUIDE 2105 (50446)	C	EA	1	*	*	*	*	24	6
P C	1005-874-8697	GUARD, TRIGGER 19474 (50446)	C	EA	1	*	*	*	*	24	7
P C	1005-049-9419	SCREW, FRONT SWIVEL BASE: 233 (50446)	C	EA	2	*	*	*	*	24	8

(1)	(2)	(3)	(4)	(5)	(6)				(7)			
					15-DAY ORGANIZATIONAL MAINTENANCE ALW				ILLUS-TRATION			
					(a)	(b)	(c)	(d)	(a)	(b)		
SMR CODE (A) (B) (C)	FEDERAL STOCK NUMBER	DESCRIPTION REF NUMBER & MFR CODE	USABLE ON CODE	UNIT OF MEAS	QTY INC IN UNIT	1-5	6-20	21-50	51-100	FIG. NO.	ITEM NO.	
P	C	1005-344-5898	SCREW, FRONT SWIVEL: 113 (50446)	C	EA	1	*	*	*	*	24	9
C	P	C	1005-731-0873	SWIVEL, FRONT: 5 (50446)	C	EA	1	.	.	*	24	10
P	C	1005-731-0782	BASE, FRONT SWIVEL 232 (50446)	C	EA	1	*	.	*	*	24	11
P	C	1005-874-8700	SCREW, MAGAZINE LOCK 19636 (50446)	C	EA	1	*	*	*	*	24	12
P	C	1005-874-8690	LOCK, MAGAZINE: 96 (50446)	C	EA	1	*	*	*	*	24	13
REPAIR PARTS FOR: CALIBER .30 WINCHESTER RIFLE, MODEL 70, CHAMBERED FOR 30-05AND .300 H AND H MAGNUM (MATCH GRADE) BARREL AND RECEIVER GROUP												
P	C	1005-654-5171	STOP, BOLT- 3070 (66118)	E	EA	1	*	*	*	*	27	2
P	C	1005-654-5173	SPRING, BOLT STOP PLUNGER. 3270 (66118)	E	EA	1	*	*	*	*	27	4
STOCK GROUP												
P	C	1005-831-219t	SCREW, BUTT PLATE: 5170 (66118)	E	EA	1	*	*	*	*	29	2
P	C	1005-831-2240	BASE ASSEMBLY, STOCK SWIVEL. 13970 (6118)	E	EA	1	*	*	*	*	29	5
P	C	1005-831-2213	BOW ASSEMBLY, GUARD: 8070 (66118)	E	EA	1	*	*	*	*	29	6
P	C	1005-654-51U8	CATCH, MAGAZINE COVER 9570 (66118)	E	EA	1	*	*	*	*	29	8
P	C	1005-654-5188	SPRING, MAGAZINE COVER CATCH: 9770 (66118)	E	EA	1	*	*	*	*	29	9
C	P	C	1005-831-2247	BOW, FOREARM, ADJUST MENT SWIVEL 7970E (U6118)	E	EA	1	*	*	*	29	11
P	C	1005-831-2244	SCREW, FOREARM ADJUST- MENT BASE: 7970B (66118)	E	EA	1	*	*	*	*	29	13
C	P	C	1005-831-2249	BASE, FOREARM ADJUST MENT SWIVEL BOW: 7970H (66118)	E	EA	1	*	*	*	29	14
P	C	1005-831-2248	SCREW, FOREARM ADJUST MENT SWIVEL BOW BASE: 7970G (66118)	E	EA	1	*	*	*	*	29	15
P	C	1005-831-2346	BASE, FOREARM ADJUST MENT, SWIVEL- 7970D (66118)	E	EA	1	*	*	*	*	29	16
C	P	C	1005-31-2243	ADJUSTMENT BASE, FORE FOREARM: 7970A (66118)	E	EA	1	*	*	*	29	17
P	C	1005-831-2250	ESCUTCHEON, FOREARM ADJUSTMENT BOW SCREW: 7970L (66110)	E	EA	1	*	*	*	*	29	18
P	C	1005-831-2:45	ESCUTCHEON, FOREARM ADJUSTMENT BASE SCREW: 7970C (66118)	E	EA	1	*	*	*	*	29	19

SECTION III

(1) SMR CODE <small>(A) (B) (C)</small>	(2) FEDERAL STOCK NUMBER	(3) DESCRIPTION REF NUMBER & MFR CODE	(4) UNIT OF MEAS USABLE ON CODE	(5) QTY INC IN UNIT	(6) 15-DAY ORGANIZATIONAL MAINTENANCE ALW				(7) ILLUS- TRATION	
					(a)	(b)	(c)	(d)	(a)	(b)
					1-5	6-20	21-50	51-100	FIG. NO.	ITEM NO.
P	C	1005-654-4058	EA.	..	*	*	*	*	30	...
N	P	1005-714-1245	EA.	..	*	*	*	*

SECTION VI REPAIR PARTS LIST

(1) SMR CODE	(2) FEDERAL STOCK NUMBER	(3) DESCRIPTION REF. NUMBER & MFR CODE	(4) Unit of meas USABLE ON CODE	(5) QTY INC IN UNIT	(6) 30 DAY DS MAINT ALLOWANCE			(7) 30 DAY DS MAINT ALLOWANCE			(8) 1-YR ALW PER 100 EQUIP CNTGY	(9) DEPOT MAINT ALW PER 100 EQUIP	(10)	
					(A)	(B)	(C)	(A)	(B)	(C)			(A)	(B)
					1-20	21-50	51-100	1-20	21-50	51-100			FIG. NO.	ITEM NO.
P F	1005-887-5800	PLATE, TRIGGER GUIDE' 17055 (50446)	B EA	1	*	*	*	*	*	*	11	4	
P F	1005-87-8958	SCREW, FRONT SWIVEL 19797 (50446)	B EA	1	*	*	*	*	*	*	11	5	
P F	1005-87-8959	BLOCK, FRONT SWIVEL: 19798 (50446)	B EA	1	*	*	*	*	*	*	11	6	
P F	1005-887-5806	WASHER, FRONT SWIVEL: 18870 (50446)	B EA	1	*	*	*	*	*	*	11	7	
P F	1005-887-8953	SWIVEL, FRONT: 19792 (50446)	B EA	1	*	*	*	*	*	*	11	8	
P F	1005-887-8956	BUSHING, FRONT SWIVEL: 19795 (50446)	B EA	1	*	*	*	*	*	*	11	9	
P F	1005-887-8654	BASE, FRONT SWIVEL 19793 (50446)	B EA	1	*	*	*	*	*	*	11	10	
P F	1005-887-8957	NUT, FRONT SWIVEL: 19796 (50446)	B EA	1	*	*	*	*	*	*	11	11	
P F	1005-887-8955	SCREW, FRONT SWIVEL BASE: 19794 (50446)	B EA	2	*	*	*	*	*	*	11	12	
P F	1005-887-846	SCREW, BEDDING 19776 (50446)	B EA	2	*	*	*	*	*	*	11	13	
P F	1005-887-8978	BALL, BEDDING DETENT 23220 (50446)	B EA	2	*	*	*	*	*	*	11	14	
P F	1005-887-895	SPRING, BEDDING DETENT: 19774 (50446)	B EA	1	*	*	*	*	*	*	11	15	
P F	1005-887-8945	ESCUTCHEON, BEDDING: 19775 (50446)	B EA	1	*	*	*	*	*	*	11	16	
P F	1005-887-8973	STOCK H-2 22580 (50446)	B EA	1	*	*	*	*	*	*	11	17	
		REPAIR PARTS FOR: CALIBER .22 WINCHES- TER RIFLE, MODEL 52D (MATCH GRADE) MAJOR ASSEMBLIES AND GROUPS												
C P F	1005-970-8605	BOLT ASSEMBLY, BREECH: 1252CD (66118)	D EA	1	*	*	*	*	*	*	12	1	
C P O	1005-970-8603	SCREW, TANG 6752D (6118)	D EA	1	*	*	*	*	*	*	12	2	
C P O	1005-970-8602	NUT, TANG SCREW: 6852D (66118)	D EA	1	*	*	*	*	*	*	12	3	
C P O	1005-70-8800	SCREW, STOCK. 5752D1: (66118)	D EA	2	*	*	*	*	*	*	12	4	
N A F	BARREL AND RECEIVER GROUP:	D ...	1	12	5	
N A O	STOCK GROUP: BREECH BOLT ASSEMBLY	D ...	1	12	6	
C P F	1005-970-8641	PIN, FIRING PIN GUIDE: 3252CD (66118)	D EA	1	*	*	*	*	*	*	13	1	
C P F	1005-970-8606	HANDLE, BREECH BOLT: 1352CD (66118)	D EA	1	*	*	*	*	*	*	13	2	
C P F	1005-970-8642	PLUG, FIRING PIN. 3352CD (68118)	D EA	1	*	*	*	*	*	*	13	3	
C P O	1005-70-8613	SPRING, FIRING PIN: 3452CD (66118)	D EA	1	*	*	*	*	*	*	13	4	
C P F	1005-970-8636	PIN, FIRING: 3152CD (66118)	D EA	1	*	*	*	*	*	*	13	5	
C P F	1005-970-8633	PIN, EXTRACTOR: 285CD (66118)	D EA	2	*	*	*	*	*	*	13	6	
C P F	1005-90-8631	EXTRACTOR, RIGHT HAND: 2652CD (66118)	D EA	1	*	*	*	*	*	*	13	7	
				16										

SECTION VI REPAIR PARTS LIST

(1)	(2)	(3)		(4)	(5)	(6)			(7)			(8)	(9)	(10)			
						30 DAY DS MAINT ALLOWANCE			30 DAY DS MAINT ALLOWANCE					1-YR ALW PER 100 EQUIP CNTGY	DEPOT MAINT ALW PER 100 EQUIP	(A)	(B)
						(A)	(B)	(C)	(A)	(B)	(C)						
SMR CODE	FEDERAL STOCK NUMBER	DESCRIPTION REF. NUMBER & MFR CODE		USABLE ON CODE	Unit of meas	QTY INC IN UNIT	1-20	21-50	51-100	1-20	21-50	51-100					
C	P F	1005-970-8634	SPRING, EXTRACTOR, RIGHT 2952CD (66118)	D	EA	1	*	*	*	*	*	*	*	13	8	
C	P 0	1005-970-8632	EXTRACTOR, LEFT HAND: 2752CD (66118)	D	EA	1	*	*	*	*	*	*	*	13	9	
C	P F	1005-970-8635	SPRING, EXTRACTOR, LEFT HAND: 3052CD (66118)	D	EA	1	*	*	*	*	*	*	*	13	10	
C	P F	1005-970-8604	BOLT, BREECH: 1152CD (66118) BARREL AND RECEIVER GROUP	D	EA	1	*	*	*	*	*	*	*	13	11	
C	P F	1005-970-8652	SCREW, BREECH BOLT GUIDE 1025C (66118)	D	EA	1	*	*	*	*	*	*	*	14	1	
C	P F.	1005-970-8592	GUIDE, BREECH BOLT 1452D (66118)	D	EA	1	*	*	*	*	*	*	*	14	2	
C	P H	1005-970-8590	BARREL, HEAVY 28 INCH 252D (66118)	D	EA	1	*	*	*	*	*	*	*	14	3	
C	P F	1005-970-8607	PIN, BREECH BOLT HANDLE LOCKING PLUNGER- 15S2CD (66118)	D	EA	1	*	*	*	*	*	*	*	14	4	
C	P F	1005S-970-808	SPRING, LOCKING PLUNGER, BREECH BOLT HANDLE: 1652D (66118)	D	EA	1	*	*	*	*	*	*	*	14	5	
C	P F	1005-970-8610	PLUNGER, LOCKING, BREECH BOLT HANDLE 1852CD (66118)	D	EA	1	*	*	*	*	*	*	*	14	6	
N	P F	RECEIVER 4752CD (66118) TRIGGER HOUSING ASSEMBLY	D	...	1	14	7	
C	P F	1005-970-8616	SCREW, HOUSING 4152CD (66118)	D	EA	1	*	*	*	*	*	*	*	15	1	
C	A F	HOUSING ASSEMBLY: 4252D (66118)	D	EA	1	15	2	
C	P F	1005-970-8615	PIN, RETAINING, HOUSING 4052CD (66118)	D	EA	1	*	*	*	*	*	*	*	15	3	
C	P F	1005-970-8628	SCREW, TRIGGER PULL ADJUSTING: 6452CD (66118)	D	EA	1	*	*	*	*	*	*	*	15	4	
C	P F	1005-970 1629	SPRING, TRIGGER PULL ADJUSTING: 6552CD (66118)	D	EA	1	*	*	*	*	*	*	*	15	5	
C	P F	1005-970-8597	SCREW, ADJUSTING, OVERTRAVEL 4652D (66118)	D	EA	1	*	*	*	*	*	*	*	15	6	
	P F	1005-970-8591	SCREW, LOCKING, ADJUSTMENT- 052CD (66118)	D	EA	2	*	*	*	*	*	*	*	15	7	
C	P F	1005-970-8621	PIN, SEAR PIVOT: 5252CD (66118)	D	EA	1	*	*	*	*	*	*	*	15	8	
C	P F	1005-70-8620	SPRING, SEAR- 5152CD (66118)	D	EA	1	*	*	*	*	*	*	*	15	9	
C	P F	1005-970-8619	SEAR: 5052CD (66118)	D	EA	1	*	*	*	*	*	*	*	15	10	
C	P F	1005-970-8618	PIN, ROCKER, TRIGGER, TRIGGER SPRING: 4952CD (66118)	D	EA	3	*	*	*	*	*	*	*	15	11	
N	P F	1005-970-8617	ROCKER: 4852D (66118)	D	EA	1	*	*	*	*	*	*	*	15	12	
C	P F	1005-970-8625	SPRING, TRIGGER: 6152CD (66118)	D	EA	1	*	*	*	*	*	*	*	15	13	
C	P F	1005-970-863	TRIGGER: 5952CD (66118)	D	EA	1	*	*	*	*	*	*	*	15	14	
					17												

SECTION VI REPAIR PARTS LIST

(1)	(2)	(3)		(4)	(5)	(6)			(7)			(8)	(9)	(10)			
						30 DAY DS MAINT ALLOWANCE			30 DAY DS MAINT ALLOWANCE					1-YR ALW PER 100 EQUIP CNTGY	DEPOT MAINT ALW PER 100 EQUIP	(A)	(B)
						(A)	(B)	(C)	(A)	(B)	(C)					FIG. NO.	ITEM NO.
SMR CODE	FEDERAL STOCK NUMBER	DESCRIPTION	USABLE ON CODE	Unit of meas	QTY INC IN UNIT	1-20	21-50	51-100	1-20	21-50	51-100						
		REF. NUMBER & MFR CODE															
C	P F	1005-970-U26	PIN, TRIGGER LEVER: 6252CD (66118)	D	EA	*	*	*	*	*	*	*	15	15		
C	P F	1005-970-8624	LEVER, TRIGGER: 6052D (66118)	D	EA	1	*	*	*	*	*	*	15	16		
C	P F	1005-970-8612	SCREW, ENGAGEMENT ADJUSTING 2552CD (66118)	D	EA	1	*	*	*	*	*	*	15	17		
C	P F	1005-970-8614	HOUSING: 3952CD (66118)	D	EA	1	*	*	*	*	*	*	15	18		
C	P F	1005-970-8622	SPRING, SAFETY LEVER 5452CD (66118)	D	EA	1	*	*	*	*	*	*	15	19		
C	P F	1005-970-8598	LEVER, SAFETY: 5352CD (66118)	D	EA	1	*	*	*	*	*	*	15	20		
C	P F	1005-970-8609	LOCK, BREECH BOLT 1752CD (66118)	D	EA	1	*	*	*	*	*	*	15	21		
C	P F	1005-970-8599	STOCK GROUP STOCK ASSEMBLY. 5652D (66118)	D	EA	1	*	*	*	*	*	*	16	1		
C	P O	1005-970-8611	SCREW, BUTT PLATE 9112 (66118)	D	EA	2	*	*	*	*	*	*	16	2		
C	P O	1005-970-8593	PLATE, BUTT: 1952D (66118)	D	EA	1	*	*	*	*	*	*	16	3		
N	A F	STOCK	D	...	1	16	4		
C	P O	1005-970-8594	SCREW, GUARD 3752D (66118)	D	EA	1	*	*	*	*	*	*	16	5		
C	P O	1005-970-8595	GUARD: TRIGGER 3652D (66118)	D	EA	1	*	*	*	*	*	*	16	8		
C	P O	1005-971-1588	LEVER, CLAMP 2352D (66118)	D	EA	1	*	*	*	*	*	*	16	7		
C	P O	1005-972-0195	SWIVEL, FOREARM: 3552D (66118)	D	EA	1	*	*	*	*	*	*	16	8		
C	P O	1005-971-1590	STOP HAND 3852D (66118)	D	EA	1	*	*	*	*	*	*	16	9		
C	P O	1005-971-1589	SCREW CLAMP: 2452D (66118)	D	EA	1	*	*	*	*	*	*	16	10		
C	P O	1005-971-1592	SCREW, INSULATOR: 4452D (66118)	D	EA	1	*	*	*	*	*	*	16	11		
C	P O	1005-971-1591	INSULATOR 4352D: (66118)	D	EA	1	*	*	*	*	*	*	16	12		
C	P O	1005-971-1587	SCREW, CHANNEL: 225D (66118)	D	EA	2	*	*	*	*	*	*	16	13		
C	P F	1005-955-5515	CHANNEL STOCK: 2152D (66118)	D	EA	1	*	*	*	*	*	*	16	14		
N	A F	HOLDER ASSEMBLY: BEDDING SCREW: 1051D (66118)	D	...	1	16	15		
C	P O	1005-971-15U	PLUNGER, BEDDING: SCREW: 75D (66118)	D	EA	1	*	*	*	*	*	*	16	16		
C	P O	1005-971-1585	SPRING, BEDDING SCREW PLUNGER: 852D (66118)	D	EA	2	*	*	*	*	*	*	16	17		
C	P O	1005-971-1581	SCREW, BEDDING: 452D (66118)	D	EA	1	*	*	*	*	*	*	16	18		
C	P F	01006-971-1583	HOLDER. BEDDING: SCREW: .53D D(66118)	D	EA	1	*	*	*	*	*	*	16	19		
C	P F	1005-971-1582	BUSHING, BEDDING: SCREW: 552D (66118)	D	EA	1	*	*	*	*	*	*	16	20		
C	P O	1005-970-9601	BUSHING, STOCK SCREW: 5852D (66118)	D	EA	1	*	*	*	*	*	*	16	21		
					18												

SECTION VI REPAIR PARTS LIST

(1)	(2)	(3)	(4)	(5)	(6)			(7)			(8)	(9)	(10)			
					30 DAY DS MAINT ALLOWANCE			30 DAY DS MAINT ALLOWANCE					1-YR ALW PER 100 EQUIP CNTGY	DEPOT MAINT ALW PER 100 EQUIP	(A)	(B)
					(A)	(B)	(C)	(A)	(B)	(C)						
SMR CODE	FEDERAL STOCK NUMBER	DESCRIPTION REF. NUMBER & MFR CODE	USABLE ON CODE	Unit of meas	QTY INC IN UNIT	1-20	21-50	51-100	1-20	21-50	51-100	FIG. NO.	ITEM NO.			
N	P O	5310-464-4786	NUT, STOP: 144US2965 (41758)	A	EA	1	*	*	*	*	*	*	19	8	
N	P	05305-462-2988	SCREW, TRIGGER GUARD: FRONT 144US146 (41758)	A	EA	1	*	*	*	*	*	*	19	9	
N	P O	1005-457-0528	PLATE, MAGAZINE STOCK: 144US1191 (41758)	A	EA	1	*	*	*	*	*	*	19	10	
N	P O	1005-457-0511	GUARD, TRIGGER: 144US145 (41758)	A	EA	1	*	*	*	*	*	*	19	11	
N	P O	5305-462-8638	SCREW, SWIVEL- STOCK SHOULDER GUN 144US171 (41758)	A	EA	1	*...	*	*	*	*	*	19	12	
N	P O	5305-462-2982	SCREW, BUTT PLATE. STOCK, SHOULDER GUN 144US112 (41758)	A	EA	2	*	*..	*	*	*	*	19	13	
N	P O	1005-457-0527	PLATE, BUTT, SHOULDER GUN STOCK: 144US708 (41758)	A	EA	1	*-	*	*	*	*	*	19	14	
N	P F	1005-457-0507	BUTTON, SAFETY. GREEN 144US139 (41758)	A	EA	1	*	*	*	*	*	*	19	15	
N	P O	1005-457-0506	BUTTON, SAFETY 144US138 (41758)	A	EA	1	*	*	*	*	*	*	19	16	
N	P F	1005-457-0540	STOCK, GUN, SHOULDER 144US3203 (41758) RECEIVER, BARREL AND TRIGGER GROUP	A	EA	1	*	*	*	*	*	*	19	17	
N	P O	5305-462-2993	SCREW, BRACKET ANGLE BAR AND AD- JUSTING TRIGGER 144US626 (41758)	A	EA	1	*.	*	*	*	*.	*	20	1	
N	P F	1005-457-0515	LATCH, MAGAZINE 144US564 (41758)	A	EA	1	*	*	*	*	*	*	20	2	
N	P O	1005-457-0521	BRACKET, ANGLE BAR AND ADJUSTING TRIGGER 144US574 (41758)	A	EA	1	*	*	*	*	*	*	20	3	
N	P F	5305-462-2992	SCREW, ADJUSTING TRIGGER PULL 144US158 (41758)	A	EA	1	*	*	*	*	*	*	20	4	
N	P F	1005-457-0529	EJECTOR, CARTRIDGE 144US1192 (41758)	A	EA	1	*	*	*	*	*	*	20	5	
N	P F	5315-462-8640	PIN, TRIGGER 144US580 (41758)	A	EA	1	*.	*	*	*	*	*	20	6	
N	P F	1005-457-0520	TRIGGER: 144US571 (41758)	A	EA	1	*	*.	*	*	*	*	20	7	
N	PF	1005-457-0512	PLUNGER, TRIGGER SPRING: 14US150 (41758)	A	EA	1	*	*	*.	*	*	*	20	8	
N	P F	5360-462-2991	SPRING, HELICAL, COMPRESSION TRIGGER PLUNGER 144US149 (41758)	A	EA	1	*	*	*	*	*	*	20	9	
N	P F	5305-462-2183	SCREW, SAFETY. 144US137 (41758)	A	EA	2	*	*	*	*	*	*	20	10	
N	P F	1005-4574499	SAFETY, SMALL ARMS: 144US136 (41758)	A	EA	1	*	*	*	*	*	*	20	11	
N	P O	1005-457-0524	BRACKET, TRIGGER GUARD: BARREL AND RECEIVER ASSEMBLY 144US579 (41758)	A	EA	1	*	*	*.	*	*	*	20	12	
					20											

SECTION VI REPAIR PARTS LIST

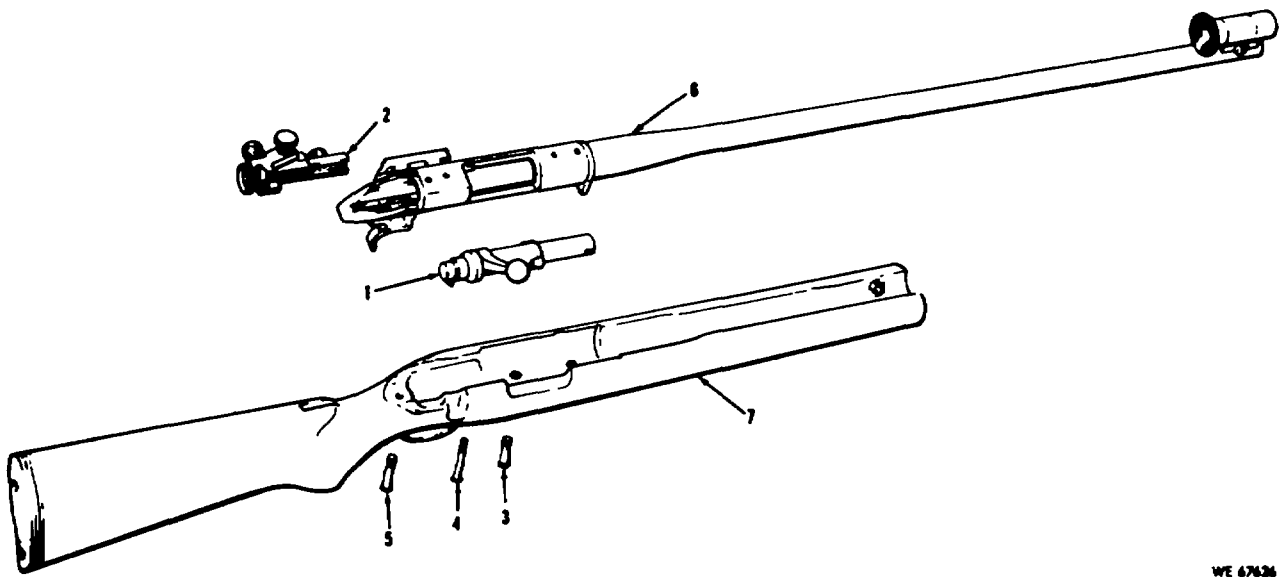
(1) SMR CODE	(2) FEDERAL STOCK NUMBER	(3) DESCRIPTION REF. NUMBER & MFR CODE	(4) USABLE ON CODE	Unit of meas	(5) QTY INC IN UNIT	(6) 30 DAY DS MAINT ALLOWANCE			(7) 30 DAY DS MAINT ALLOWANCE			(8) 1-YR ALW PER 100 EQUIP CNTGY	(9) DEPOT MAINT ALW PER 100 EQUIP	(10)	
						(A)	(B)	(C)	(A)	(B)	(C)			(A)	(B)
						1-20	21-50	51-100	1-20	21-50	51-100			FIG. NO.	ITEM NO.
P F	1005-344-5905	SCREW, SEAR PIVOT 84 (50446)	C	EA	1	*	*	*	*	*	*	23	3	
P O	1005-532-3101	SCREW, TRIGGER CUSHION SPRING: 492 (50446)	C	EA	1	*	*	*	*	*	*	23	4	
P O	1005-344-5913	SCREW, ADJUSTING, TRIGGER CUSHION SPRING- 493 (50446)	C	EA	2	*	*	*	*	*	*	23	5	
P O	1005-731-0857	SPRING, TRIGGER CUSHION 491 (50446)	C	EA	1	*	*	*	*	*	*	23	6	
P O	1005-731-0821	PLUNGER, TRIGGER SPRING 438 (50446)	C	EA	1	*	*	*	*	*	*	23	7	
P O	1005-874-8693	SPRING, TRIGGER 16360 (50446)	C	EA	1	*	*	*	*	*	*	23	8	
P F	1005-368-9667	TRIGGER ASSEMBLY 822 (50446)	C	EA	1	*	*	*	*	*	*	23	9	
P O	1005-573-8738	PIN, TRIGGER TAKE-UP 12 (50446)	C	EA	1	*	*	*	*	*	*	23	10	
P F	1005-049-9424	SPRING, TRIGGER TAKE- UP 25 (50446)	C	EA	1	*	*	*	*	*	*	23	11	
R X1 F	TRIGGER 29 (50446)	C	...	1	23	12	
P F	1005-344-5904	SCREW, SAFETY 252 (50446)	C	EA	2	*	*	*	*	*	*	23	13	
P F	1005-731-0804	LEVER, SAFETY 251 (50446)	C	EA	1	*	*	*	*	*	*	23	14	
P F	1005-368-9661	SAFETY 499 (50446)	C	EA	1	*	*	*	*	*	*	23	15	
P F	1005-512-7278	SIGHT, FRONT 343 (50446)	J	EA	1	REF	REF	REF	REF	REF			23	16	
P F	1005-049-9415	PIN, BARREL LOCK 2 (50446)	C	EA	2	*	*	*	*	*	*	23	17	
P H	1005-731-0781	BARREL TARGET GRADE, 27 INCH 230 (50446)	C	EA	1	*	*	*	*	*	*	23	18	
P F	1005-344-5881	EJECTOR 330 (50446)	C	EA	1	*	*	*	*	*	*	23	19	
P F	1005-731-0800	INSERT, RECEIVER FRONT 75 (50446)	C	EA	1	*	*	*	*	*	*	23	20	
P F	1005-083-0278	INSERT, RECEIVER: REAR 595 (50446)	C	EA	1	*	*	*	*	*	*	23	21	
N X1 F	RECEIVER 371 (50446) STOCK ASSEMBLY	C	...	1	*	*	*	*	*	*	23	22	
C P O	1005-532-3086	SCREW, BUTT PLATE. 25410 (50446)	C	EA	2	*	*	*	*	*	*	24	1	
P O	1005-731-0815	PLATE, BUTT 308 (50446)	C	EA	1	*	*	*	*	*	*	24	2	
P F	1005-731-0874	SWIVEL, REAR WITH SCREW 22560 (50446)	C	EA	1	*	*	*	*	*	*	24	3	
C P O	1005-049-9420	SCREW, TRIGGER GUARD 17577 (50446)	C	EA	3	*	*	*	*	*	*	24	4	
P F	1005-731-0793	ESCUTCHEON, TAKE- DOWN SCREW: 17569 (50446)	C	EA	1	*	*	*	*	*	*	24	5	
P O	1005-731-0816	PLATE, MAGAZINE GUIDE. 2105 (50446)	C	EA	1	*	*	*	*	*	*	24	6	
P F	1005-874-8697	GUARD, TRIGGER- 19474 (50446)	C	EA	1	*	*	*	*	*	*	24	7	
P O	1005-049-9419	SCREW, FRONT SWIVEL BASE 233 (50446)	C	EA	2	*	*	*	*	*	*	24	8	
P O	1005-344-5898	SCREW, FRONT SWIVEL 113 (50446)	C	EA	1	*	*	*	*	*	*	24	9	
C P O	1005-731-0873	SWIVEL, FRONT: 5 (50446)	C	EA	1	*	*	*	*	*	*	24	10	
					22										

SECTION VI REPAIR PARTS LIST

(1) SMR CODE	(2) FEDERAL STOCK NUMBER	(3) DESCRIPTION USABLE ON CODE REF. NUMBER & MFR CODE	(4) Unit of meas	(5) QTY INC IN UNIT	(6) 30 DAY DS MAINT ALLOWANCE			(7) 30 DAY DS MAINT ALLOWANCE			(8) 1-YR ALW PER 100 EQUIP CNTGY	(9) DEPOT MAINT ALW PER 100 EQUIP	(10)	
					(A)	(B)	(C)	(A)	(B)	(C)			(A)	(B)
					1-20	21-50	51-100	1-20	21-50	51-100			FIG. NO.	ITEM NO.
P F	1005-654-5204	SCREW, TRIGGER STOP 12170 (66118)	E EA	1	*	*	*	*	*	*	28	4	
P F	1005-384-6356	TRIGGER. 11870 (66118)	E EA	1	*	*	*	*	*	*	28	5	
P F	1005-654-5196	PIN, SEAR 11570 (66118)	E EA	1	*	*	*	*	*	*	28	6	
P F	1005-654-5195	SEAR 11470 (66118)	E EA	1	*	*	*	*	*	*	28	7	
P F	1005-210-2874	SPRING, SEAR 11670 (66118)	E EA	1	*	*	*	*	*	*	28	8	
STOCK GROUP														
P F	1005-831-2185	STOCK ASSEMBLY 0001 (66118)	F EA	1	*	*	*	*	*	*	29	1	
P O	1005-831-2198	SCREW, BUTT PLATE 5170 (66118)	E EA	1	*	*	*	*	*	*	29	2	
P F	1005-831-2197	PLATE, BUTT 5070 (66118)	E EA	1	*	*	*	*	*	*	29	3	
A F	STOCK	E ...	1	29	4	
P O	1005-831-2240	BASE ASSEMBLY, STOCK SWIVEL 13970 (66118)	E EA	1	*	*	*	*	*	*	29	5	
P O	1005-831-2213	BOW ASSEMBLY, GUARD 8070 (66118)	E EA	1	*	*	*	*	*	*	29	6	
P F	1005-654-5187	PIN, MAGAZINE COVER CATCH 9670(66118)	E EA	1	*	*	*	*	*	*	29	7	
P O	1005-654-5186	CATCH, MAGAZINE COVER 9570(66118)	E EA	1	*	*	*	*	*	*	29	8	
P O	1005-654-5188	SPRING, MAGAZINE COVER CATCH 9770 (66118)	E EA	1	*	*	*	*	*	*	29	9	
X	BOW, GUARD	E ...	1	29	10	
A F	BASE, ASSEMBLY, FOREARM ADJUSTMENT 7970M (66118)	E ...	1	29	11	
C P O	1005-831-2247	BOW, FOREARM, AD- JUSTMENT SWIVEL 7970E (66118)	E EA	1	*	*	*	*	*	*	29	12	
P O	1005-831-2244	SCREW, FOREARM ADJUSTMENT BASE 7970B (66118)	E EA	1	*	*	*	*	*	*	29	13	
P O	1005-831-2249	BASE, FOREARM ADJUSTMENT SWIVEL BOW 7970H (66118)	E EA	1	*	*	*	*	*	*	29	14	
P O	1005-831-2248	SCREW, FOREARM ADJUSTMENT SWIVEL BOW BASE 7970G (66118)	E EA	1	*	*	*	*	*	*	29	15	
P O	1005-831-2246	BASE, FOREARM ADJUSTMENT SWIVEL 7970D (66118)	E EA	1	*	*	*	*	*	*	29	16	
C P O	1005-831-2243	ADJUSTMENT BASE, FOR FOREARM 7970A (66118)	E EA	1	*	*	*	*	*	*	29	17	
P O	1005-831-2250	ESCUTCHEON, FOREARM ADJUSTMENT BOW SCREW 7970L (66118)	E EA	1	*	*	*	*	*	*	29	18	
P O	1005-831-2245	ESCUTCHEON, FOREARM ADJUSTMENT BASE SCREW 7970C (66118)	E EA	1	*	*	*	*	*	*	29	19	
				25										

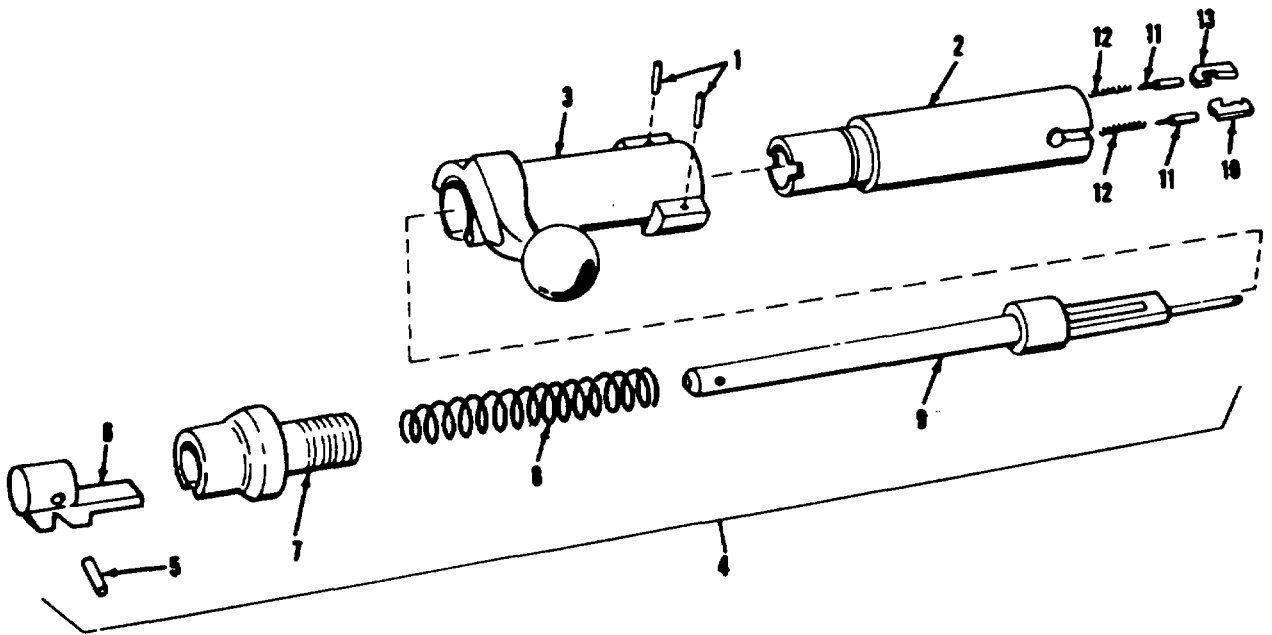
**SECTION V.
SPECIAL TOOLS LIST**

(1) SMR CODE	(2) FEDERAL STOCK NUMBER	(3) DESCRIPTION USABLE ON CODE REF. NUMBER & MFR CODE	(4) Unit of meas	(5) QTY INC IN UNIT	(6) 30 DAY DS MAINT ALLOWANCE			(7) 30 DAY DS MAINT ALLOWANCE			(8) 1-YR ALW PER 100 EQUIP CNTGY	(9) DEPOT MAINT ALW PER 100 EQUIP	(10)	
					(A)	(B)	(C)	(A)	(B)	(C)			(A)	(B)
					1-20	21-50	51-100	1-20	21-50	51-100			FIG. NO	ITEM NO
	P F 4933-398-4110	TOOLS AND EQUIPMENT GAGE, HEADSPACE .22 CAL 7319963 (19205) NOTE REFER TO TM 9-1005- 226-14 FOR USE OF HEADSPACE GAGE	EA	...	*	*	*	*	*	*	31	...
N	P F 4933-398-4108	CAGE, HEADSPACE 30 CAL 7319954 (19205) TOOLS AND EQUIPMENT AUTHORIZED FOR UNIT REPLACEMENT	EA	1	*	*	*	*	*	*	32	...
	P O 1005-654-4058	SLING, SMALL ARMS M1, WEBBING 6544058 (19204)	EA	1	*	*	*	*	*	*	30	...
N	P O 1005-714-1245	SLING, SMALL ARMS M1907, LEATHER 7141245 (19204)	EA	1	*	*	*	*	*	*		
				26										



WE 67626

Figure 7. Major assemblies and groups - Caliber .22 Remington Rifle, Model 40X-H1 (Match Grade).



WE 67639

Figure 8. Bolt assembly for Caliber .22 Remington Rifle, Model 40X-h1 - exploded view.

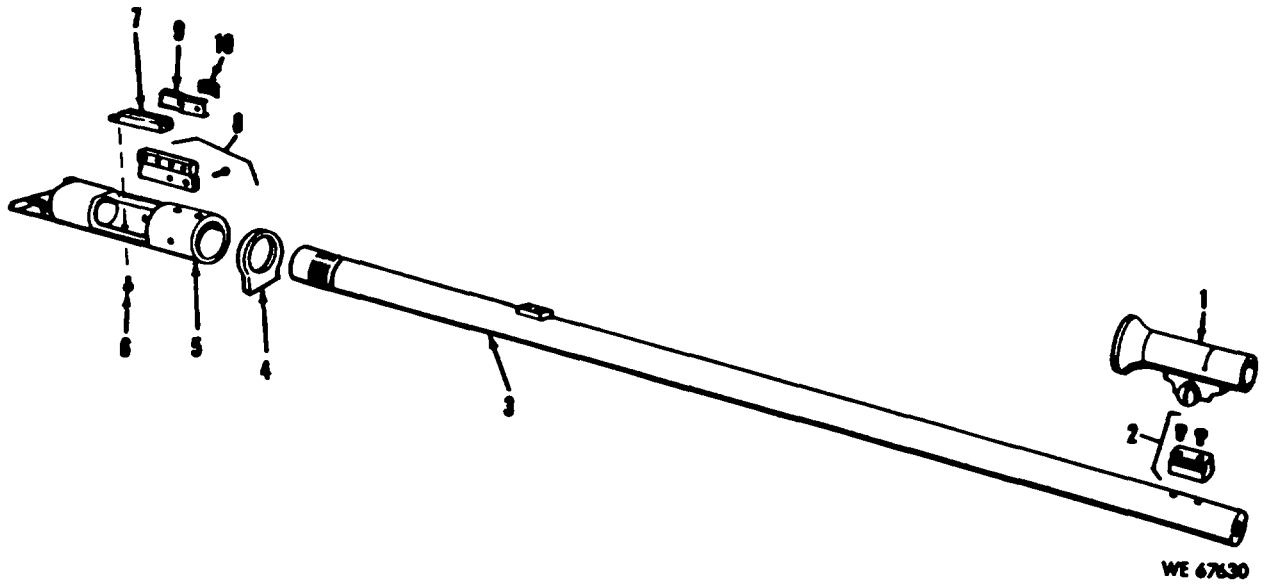


Figure 9. Barrel and receiver group for Caliber .22 Remington Rifle, Model 40X-H1, single shot - exploded view.

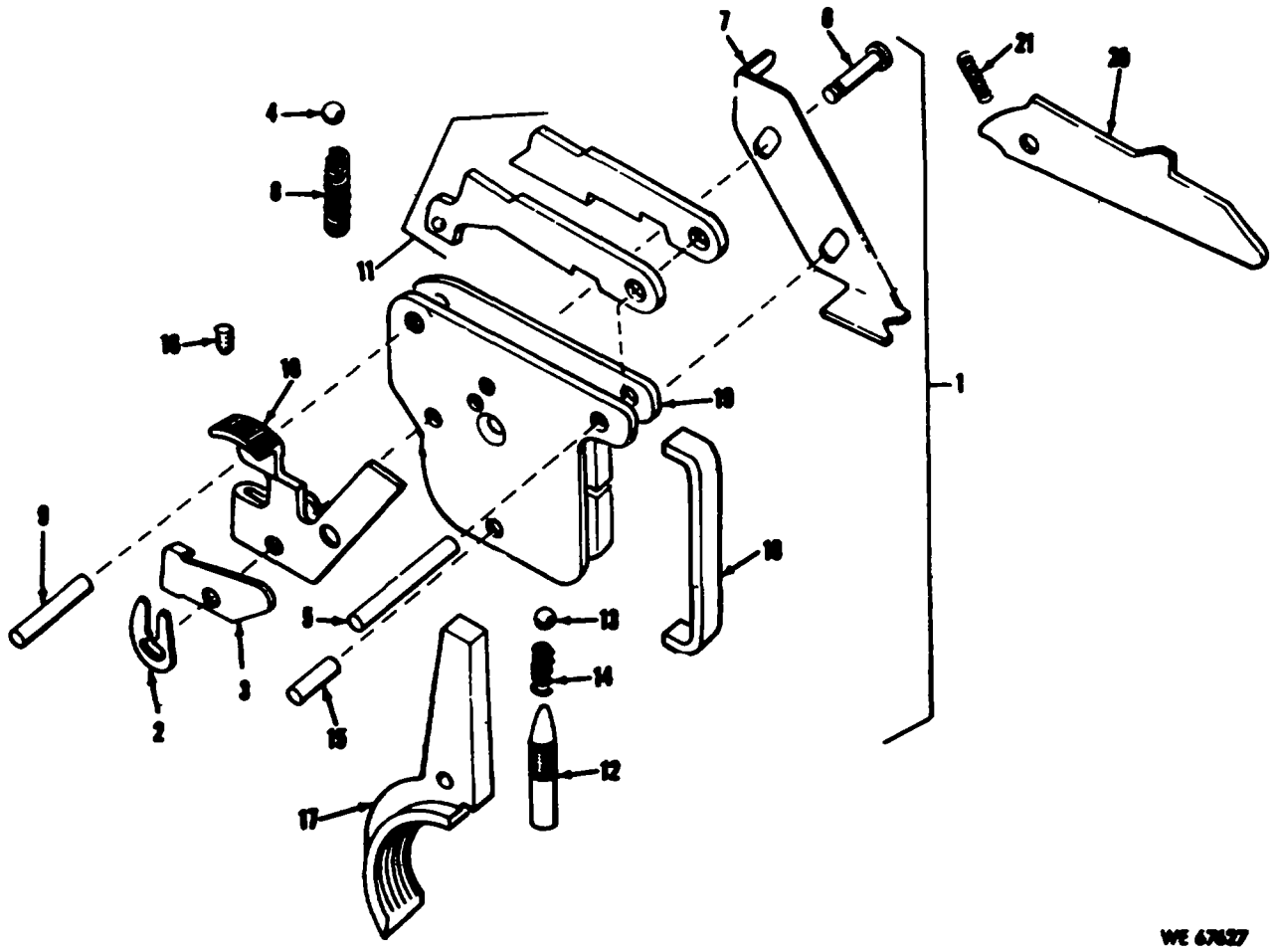


Figure 10. Trigger and gold stop group for Caliber .22 Remington Rifle, Model 40X-H1, single shot - exploded view.

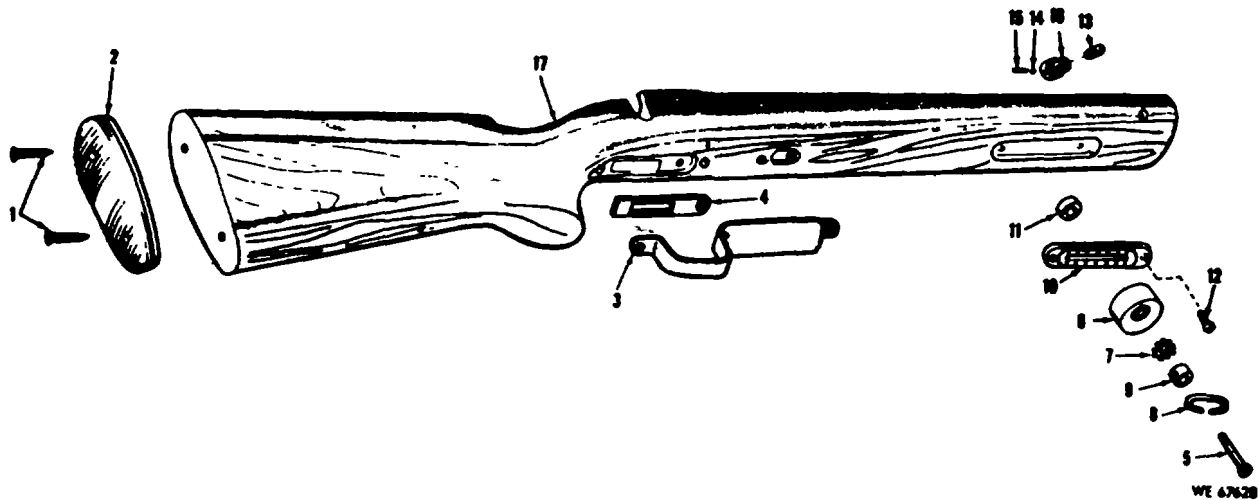


Figure 11. Stock assembly for Caliber .22 Remington Rifle, Model 40X-H1 - exploded view.

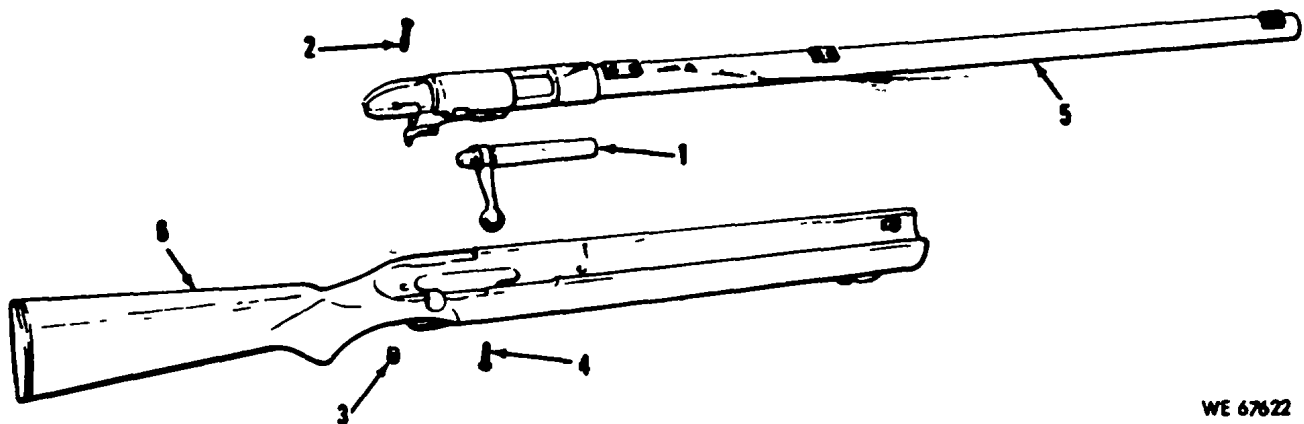


Figure 12. Major assembly and groups - Caliber .22 Winchester Rifle, Model 52D - exploded view.

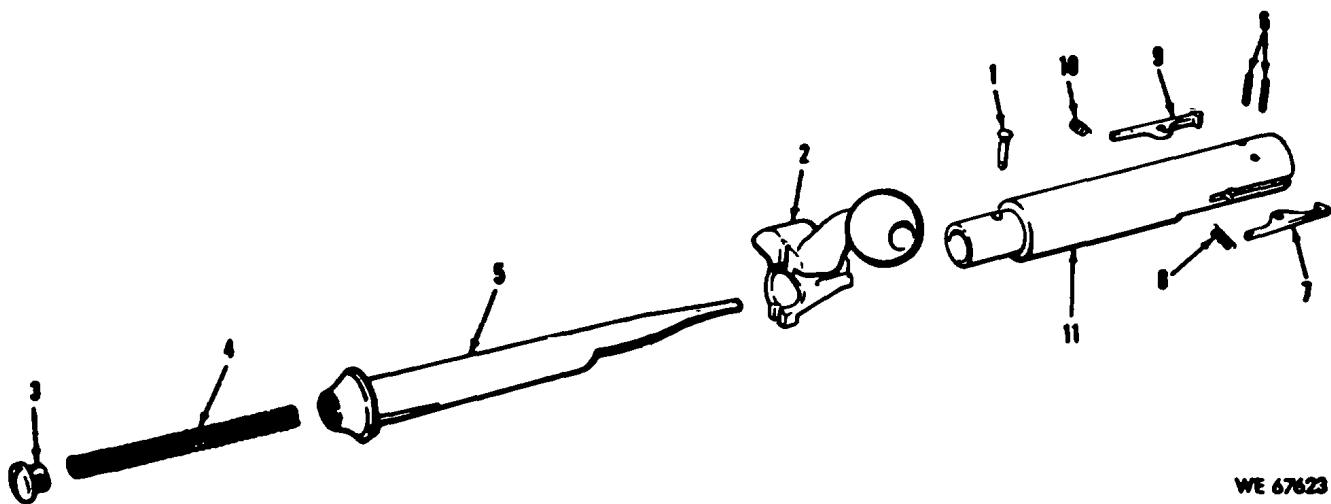
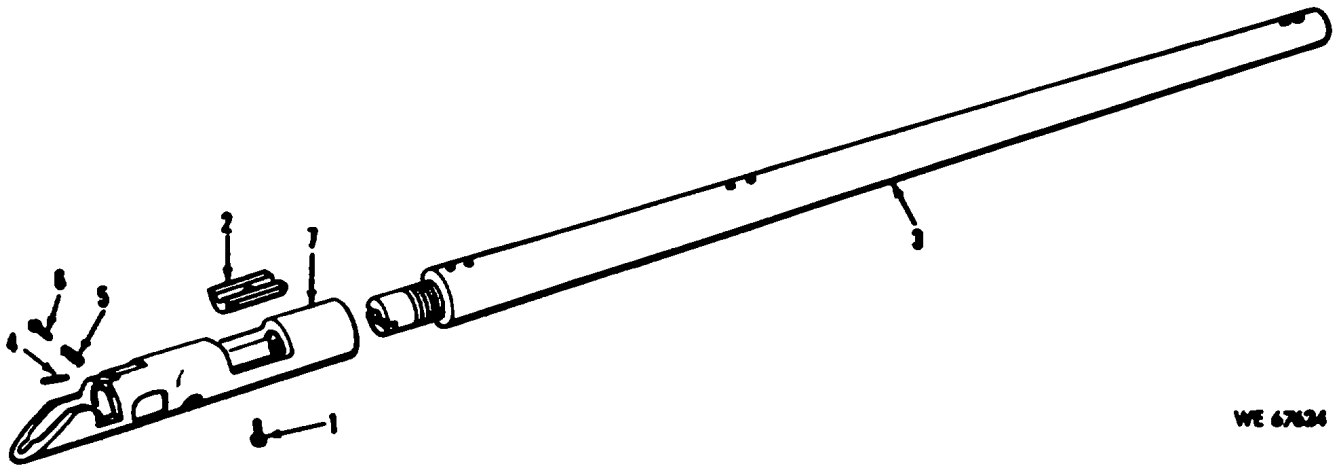
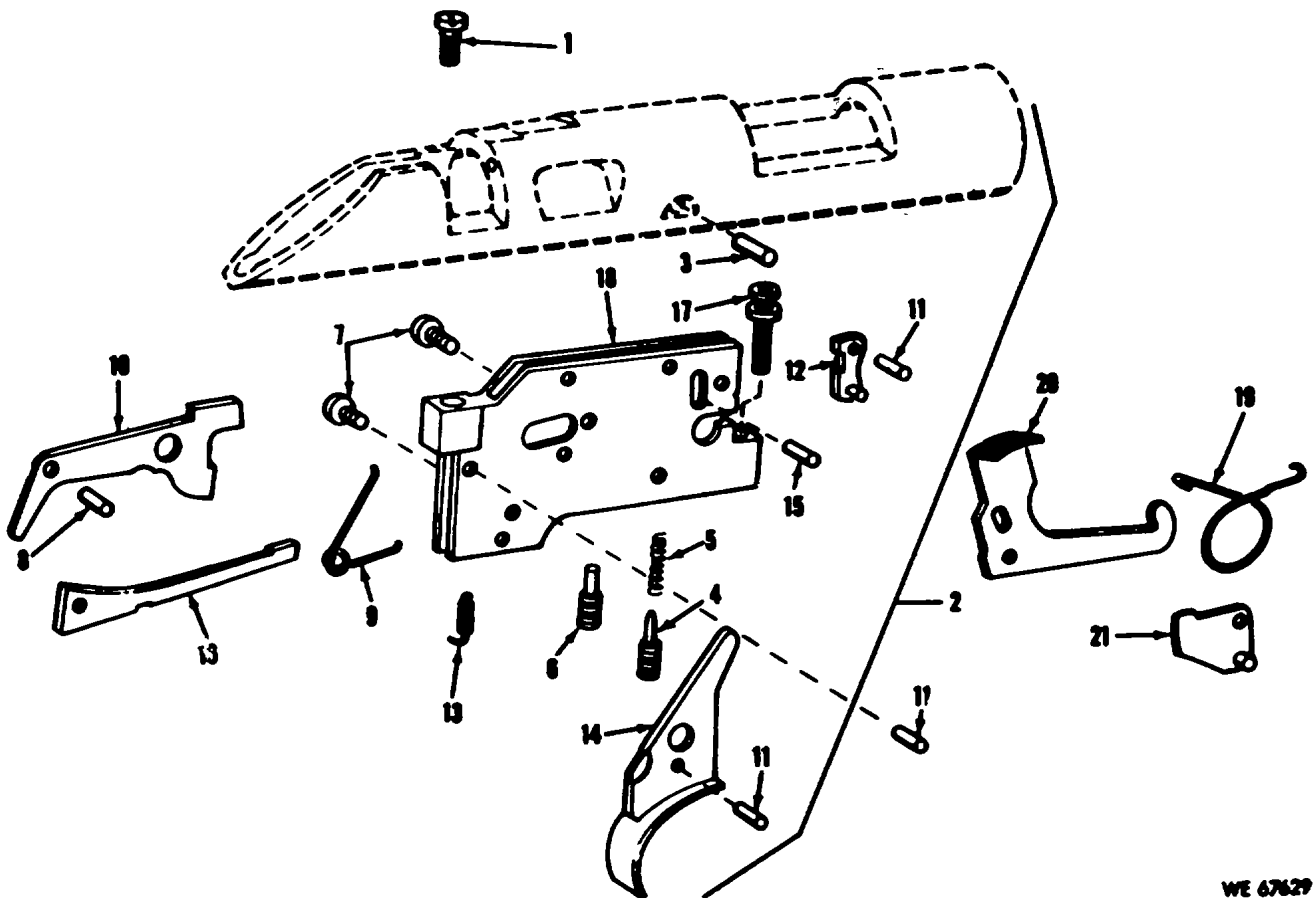


Figure 13. Breech bolt assembly for Caliber .22 Winchester Rifle, Model 52D - exploded view.



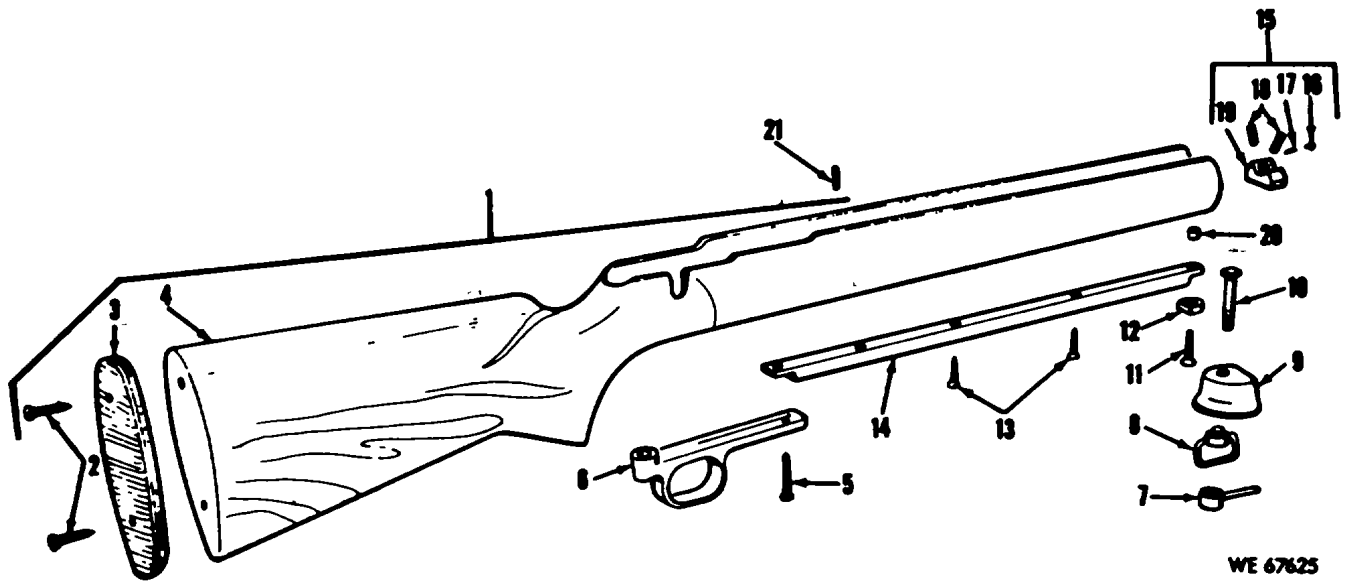
WE 67624

Figure 14. Barrel and receiver group for Caliber .22 Winchester Rifle, Model 52D - exploded view.



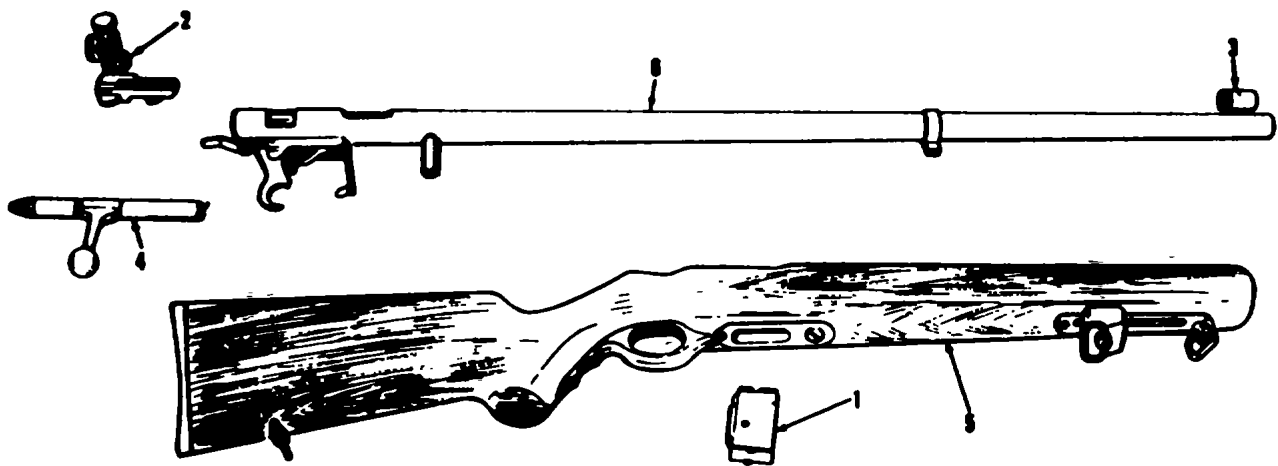
WE 67627

Figure 15. Trigger housing assembly for Caliber .22 Winchester Rifle, Model 52D - exploded view.



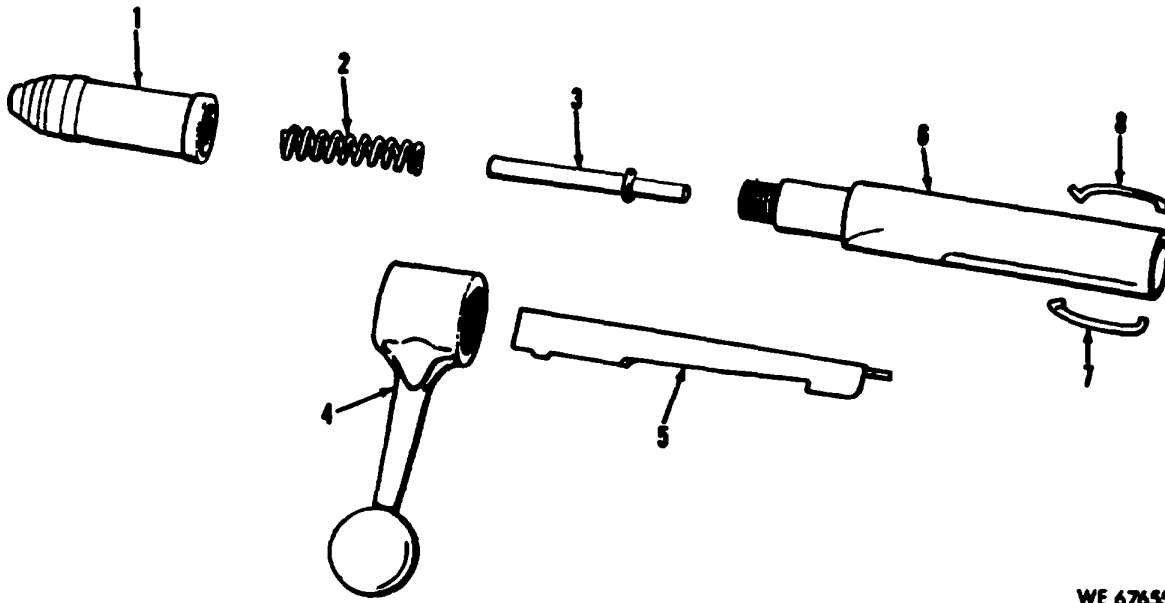
WE 67625

Figure 16. Stock group for Caliber .22 Winchester Rifle, Model 52D - exploded view.



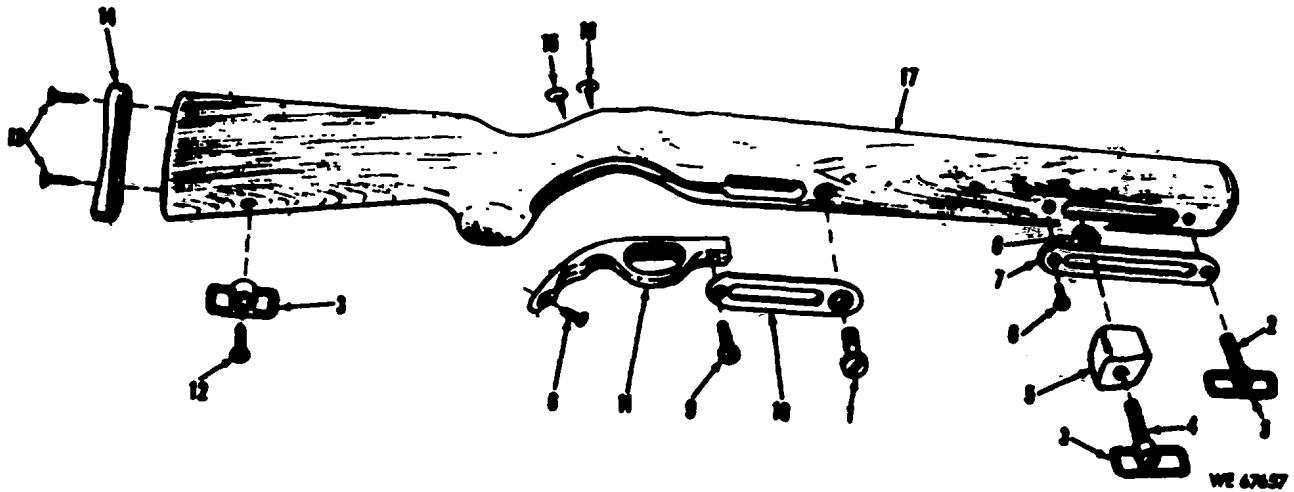
WE 47658

Figure 17. Major assemblies and groups - Caliber .22 Mossberg Rifle, Model 144US (Training Grade) - partial exploded view.



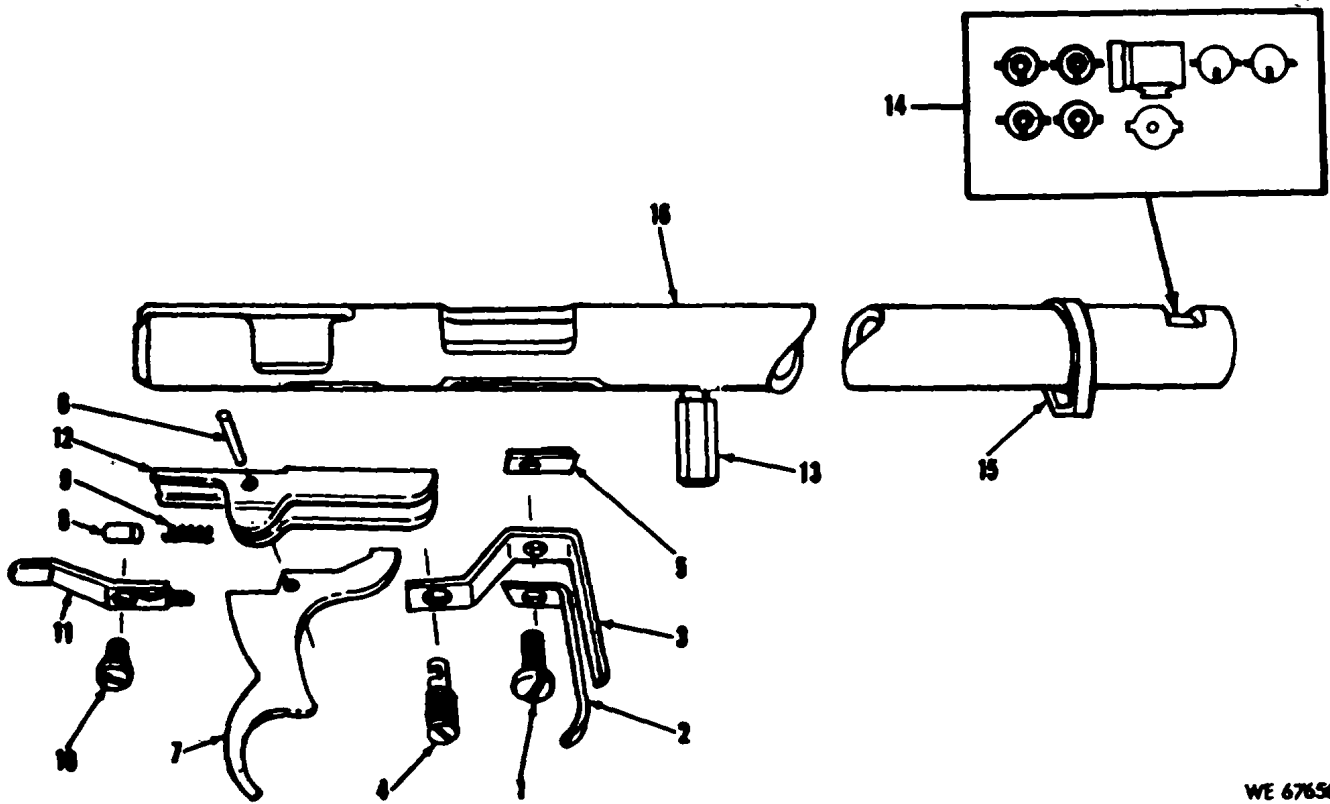
WE 67655

Figure 18. Bolt assembly - Caliber .22, Mossberg Rifle, Model 144US - exploded view.



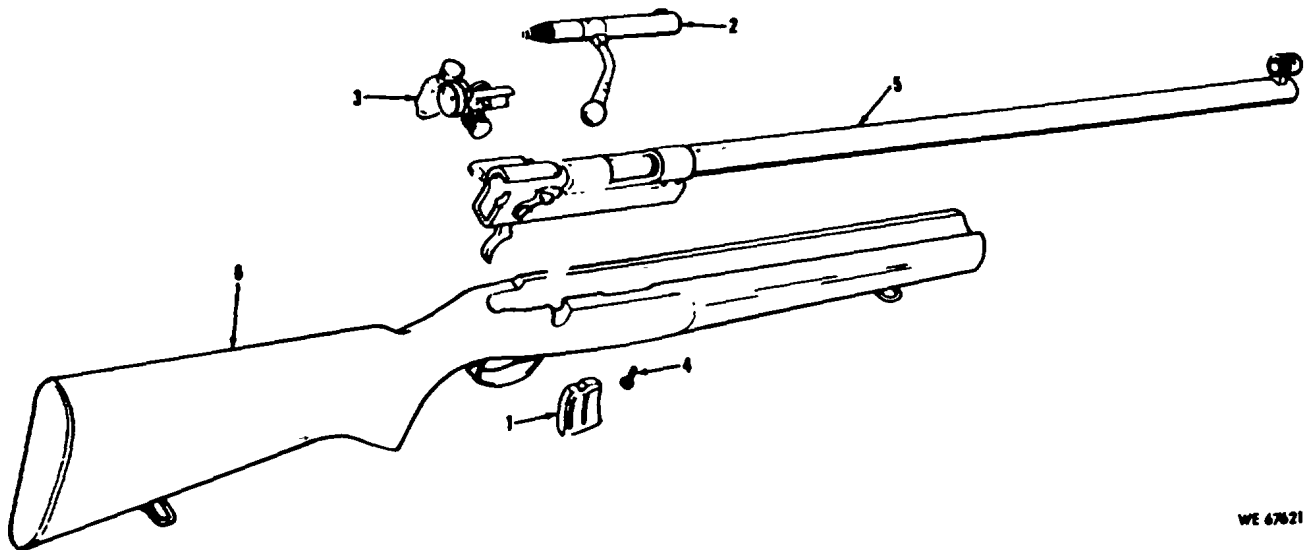
WE 67657

Figure 19. Stock group for Caliber .22 Mossberg Rifle, Model 144US - exploded view.



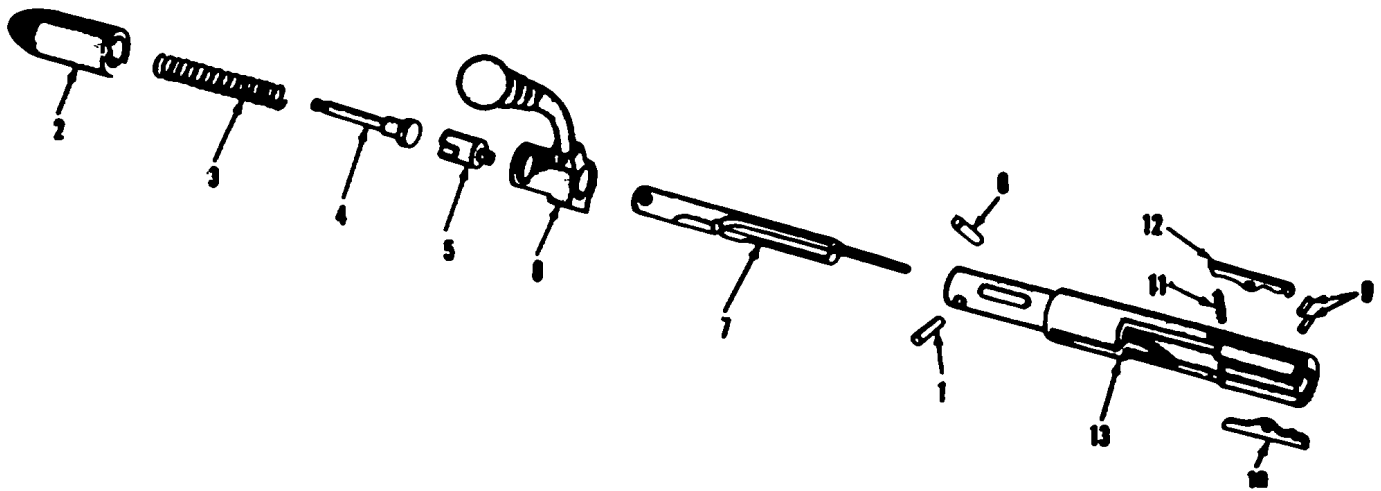
WE 67656

Figure 20. Receiver, barrel and trigger group for Caliber .22 Mossberg Rifle, Model 144US - exploded view.



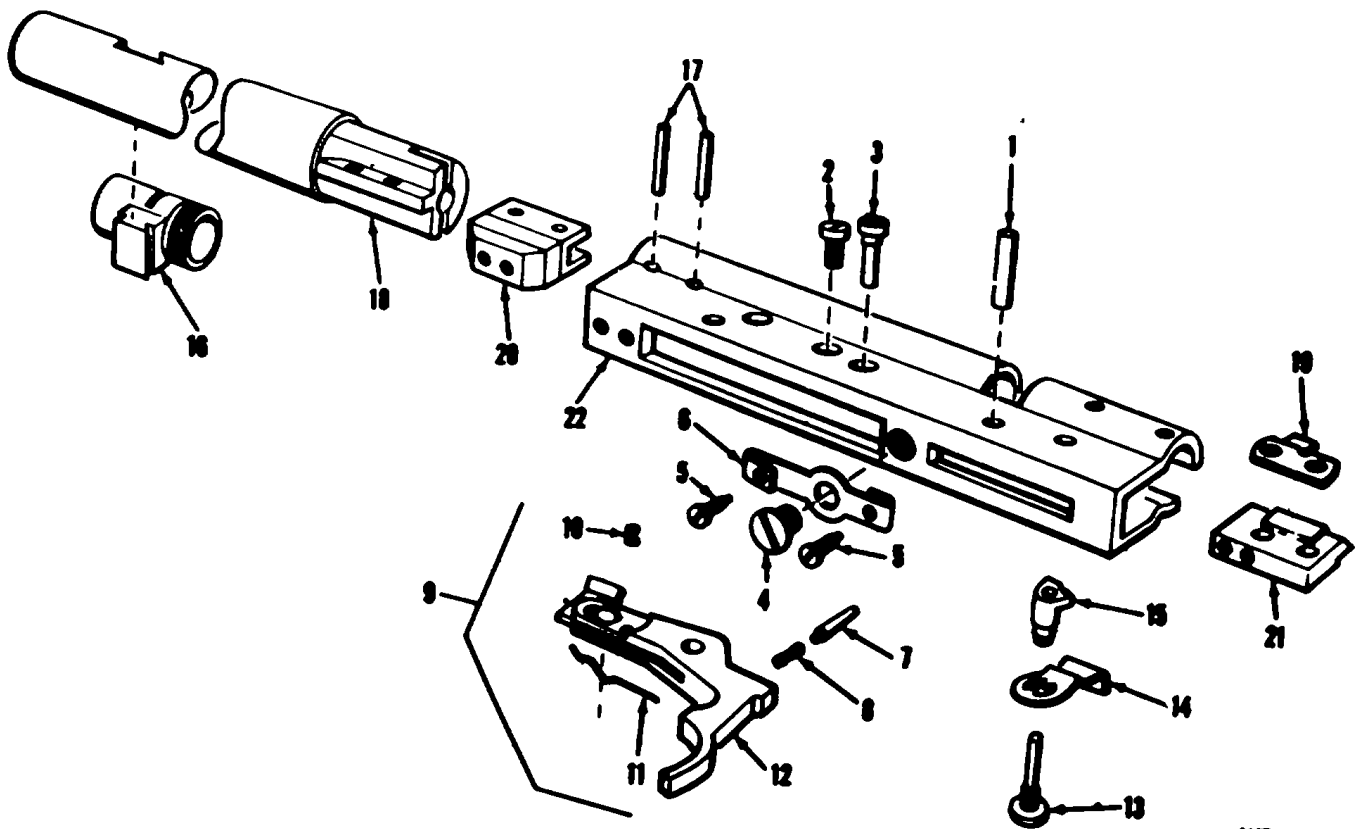
WE 67621

Figure 21. Major assemblies and groups - Caliber .22 Remington Rifle, Model 513-T (Training Grade) - partial exploded view.



WE 67638

Figure 22. Bolt assembly for Caliber .22 Rifle, Model 513-T - exploded view.



WE 67619

Figure 23. Barrel, receiver and trigger group for Caliber .22 Remington Rifle, Model 513-T - exploded view.

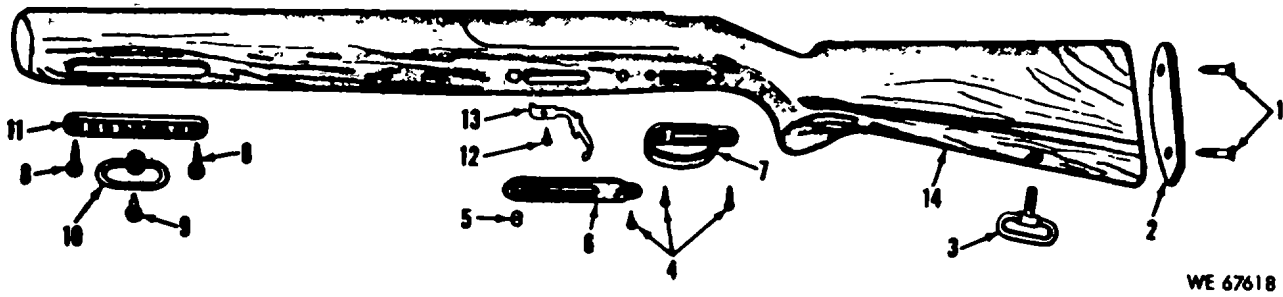


Figure 24. Stock assembly for Caliber .22 Remington Rifle, Model 513-T - exploded view.

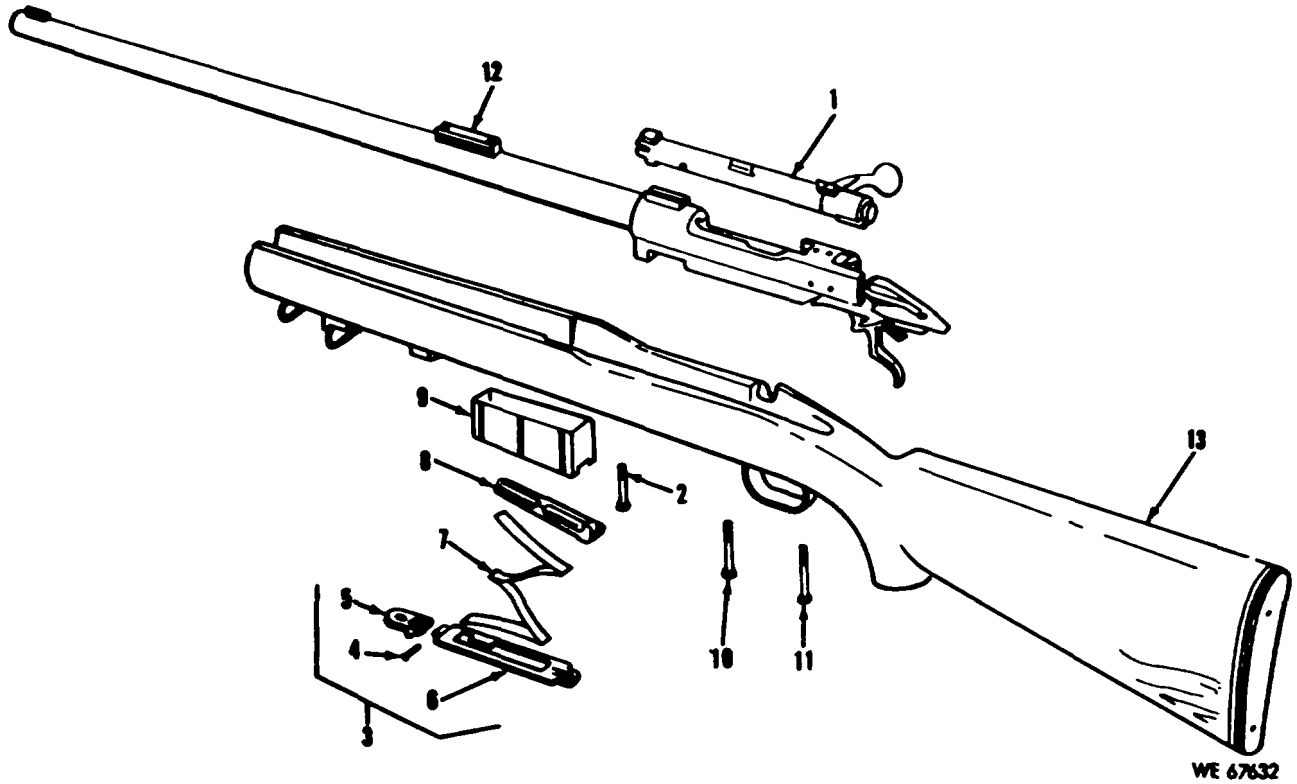
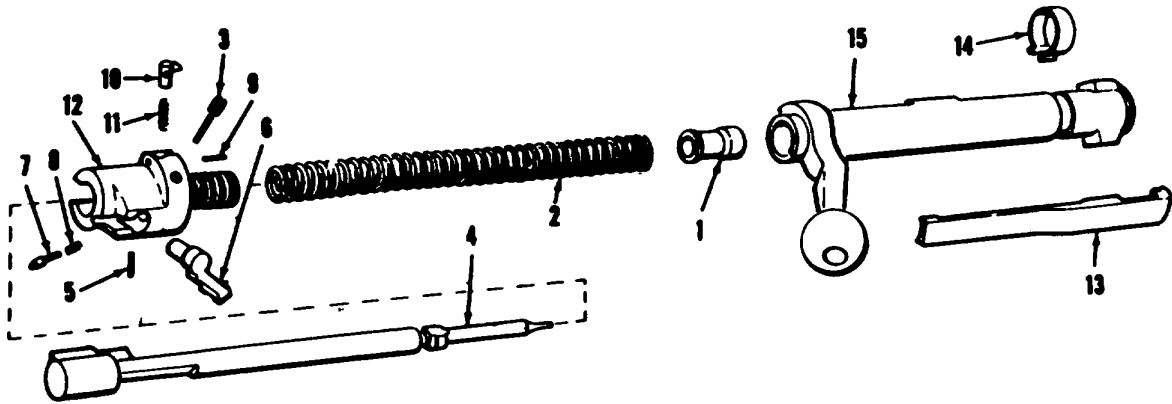
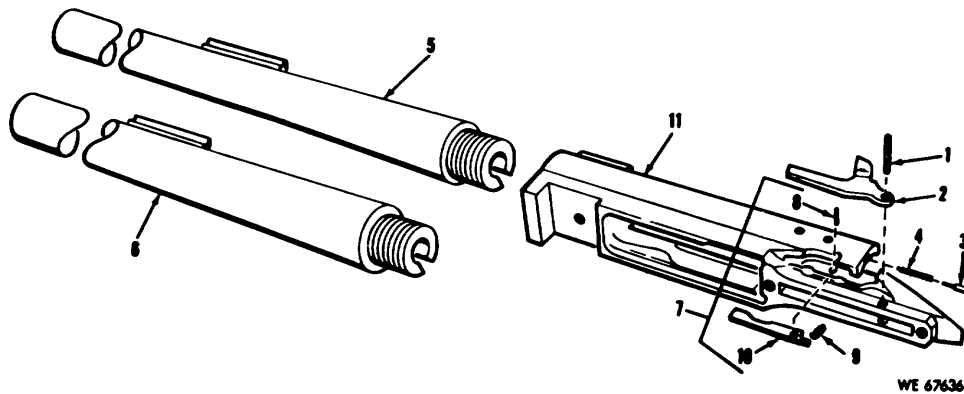


Figure 25. Major assemblies and groups, Caliber .30 Winchester Rifle, Model 70, chambered for 30-06 and .300H and H Magnum (Match Grade) - exploded view.



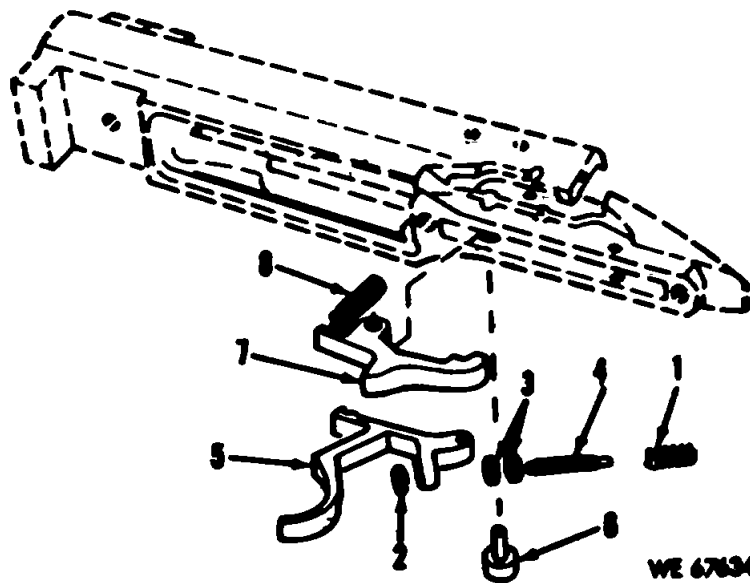
WE 67631

Figure 26. Breech bolt assembly - Caliber .30 Winchester Rifle, Model 70 - exploded view.



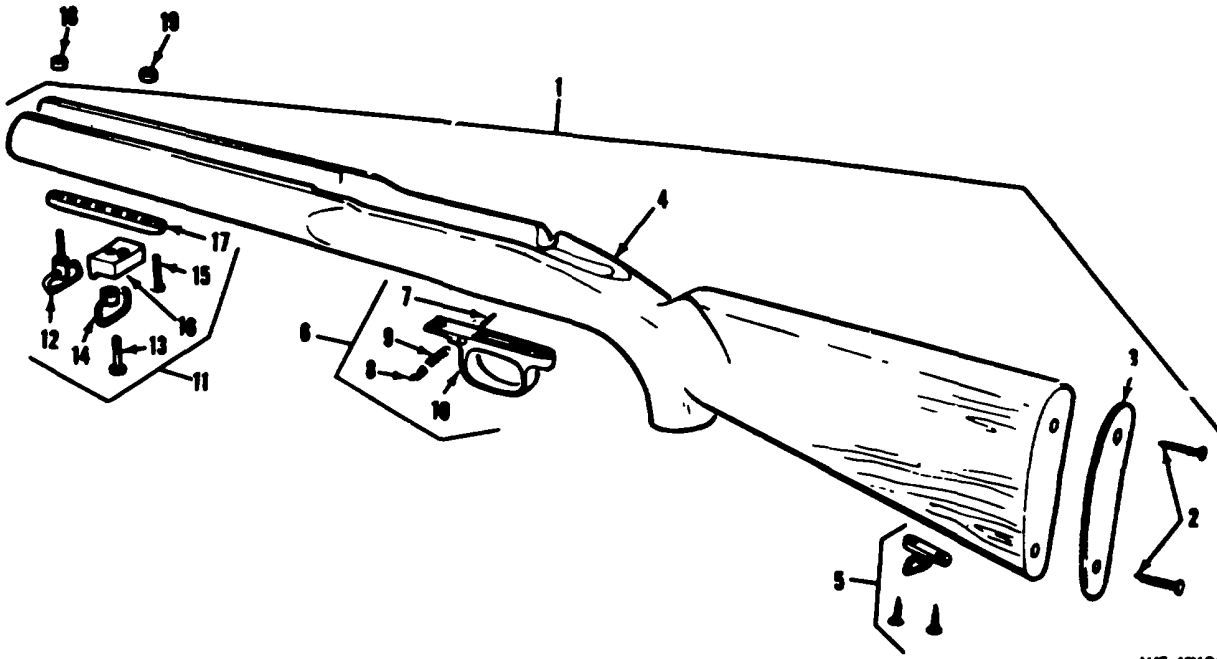
WE 67636

Figure 27. Barrel and receiver group for Caliber .30 Winchester Rifle, Model 70 - exploded view.



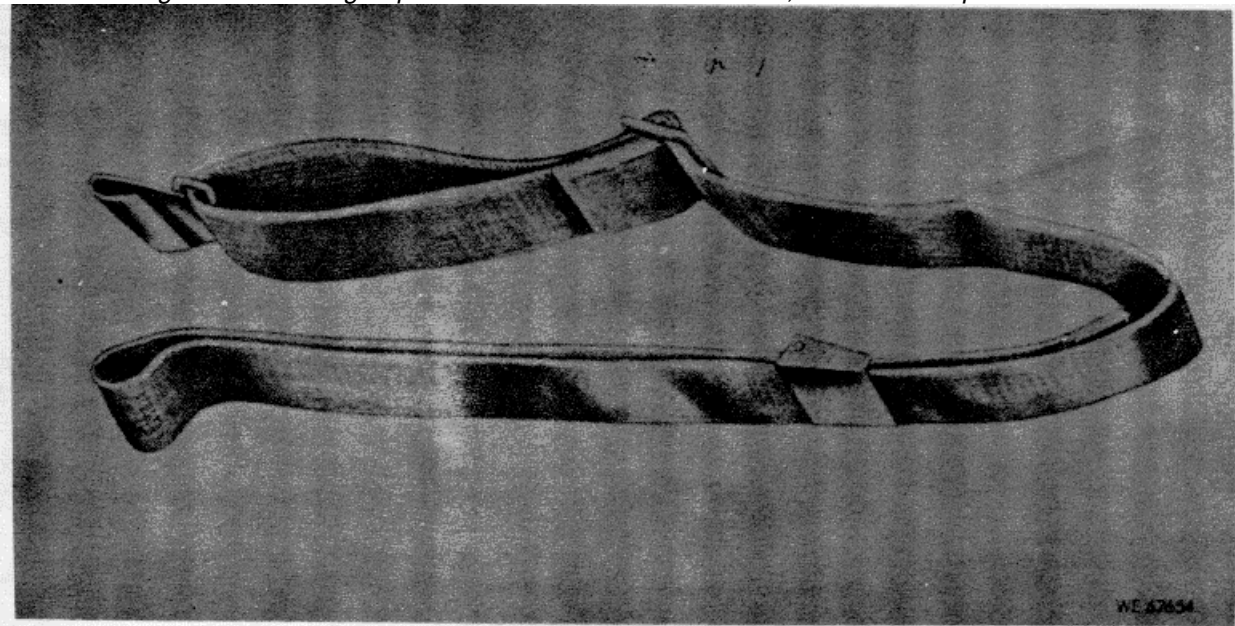
WE 67634

Figure 28. Trigger and sear group for Caliber .30 Winchester Rifle, Model 70 - Exploded View



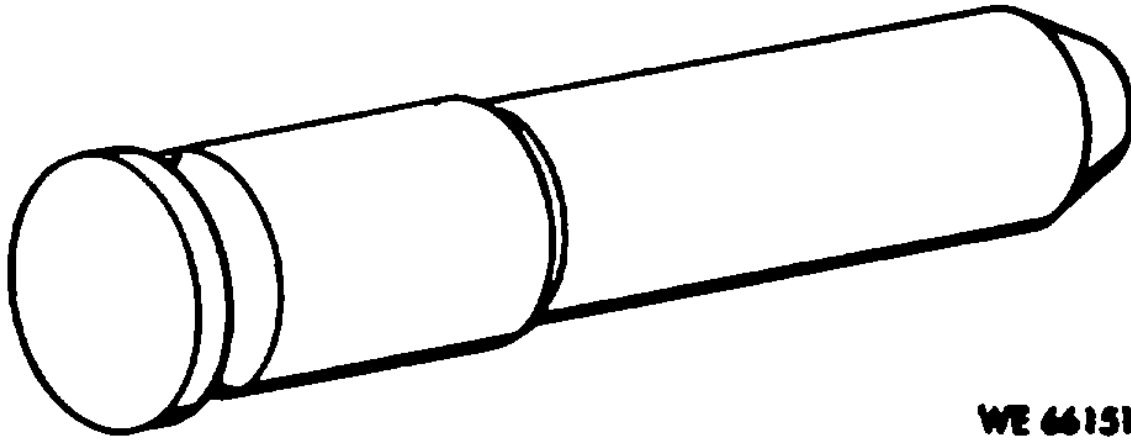
WE 67635.

Figure 29. Stock group for Caliber .30 Winchester Rifle, Model 70 - exploded view.



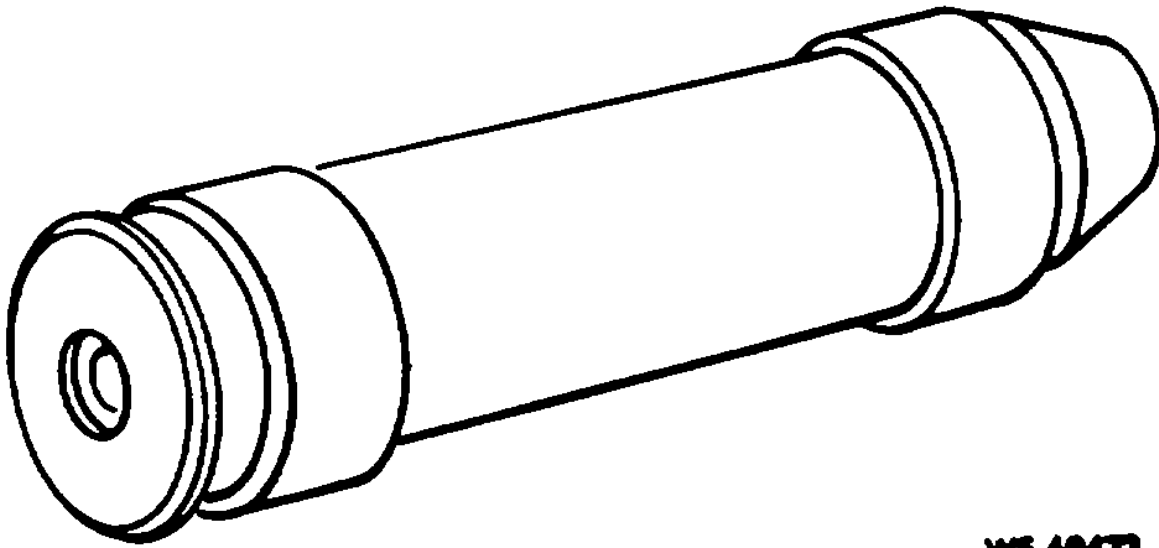
WE 67654

Figure 30. Small Arms Sling, M1.



WE 66151

Figure 31. Caliber .22 headspace gage.



WE 69473

Figure 32. Caliber .30 headspace gage.

SECTION VI. FEDERAL STOCK NUMBER AND REFERENCE NUMBER

INDEX

STOCK NUMBER	FIGURE NO.	ITEM NO.	STOCK NUMBER	FIGURE NO.	ITEM NO.
1005-022-9771	10	17	1005-532-3101	23	4
1005-022-9772	9	2	1005-573-8738	23	10
1005-022-9777	10	5	1005-609-5314	26	14
1005-022-9778	10	15	1005-654-4058	30	...
1005-049-9415	23	17	1005-654-5167	26	12
1005-049-9416	23	1	1005-654-5168	26	10
1005-049-9419	24	8	1005-654-5169	26	11
1005-049-9420	24	4	1005-654-5170	26	9
1005-049-9422	22	2	1005-654-5171	27	2
1005-049-9424	23	11	1005-654-5172	27	3
1005-083-0274	23	2	1005-654-5173	27	4
1005-083-0278	23	21	1005-654-5175	26	13
1005-210-2872	25	7	1005-654-5176	27	10
1005-210-2873	26	7	1005-654-5177	27	8
1005-210-2874	28	8	1005-654-5178	27	9
1005-344-5881	23	19	1005-654-5180	26	2
1005-344-5887	22	1	1005-654-5181	26	1
1005-344-5889	22	6	1005-654-5182	25	10
1005-344-5898	24	9	1005-654-5183	26	3
1005-344-5904	23	13	1005-654-5186	29	8
1005-344-5905	23	3	1005-654-5187	29	7
1005-344-5913	23	5	1005-654-5188	29	9
1005-368-9658	22	9	1005-654-5190	25	8
1005-368-9661	23	15	1005-654-5191	26	6
1005-368-9665	22	11	1005-654-5193	26	8
1005-368-9667	23	9	1005-654-5194	26	5
1005-384-6352	25	11	1005-654-5195	28	7
1005-384-6354	25	2	1005-654-5196	28	6
1005-384-6356	28	5	1005-654-5199	27	1
1005-457-0496	1	1	1005-654-5202	28	1
1005-457-0497	18	3	1005-654-5204	28	4
1005-457-0499	20	11	1005-654-5217	28	2
1005-457-0506	19	16	1005-659-5286	28	3
1005-457-0507	19	15	1005-731-0781	23	18
1005-457-0510	20	13	1005-731-0782	24	11
1005-457-0511	19	11	1005-731-0793	24	5
1005-457-0512	20	8	1005-731-0794	22	12
1005-457-0513	18	7	1005-731-0795	22	10
1005-457-0514	18	8	1005-731-0799	22	4
1005-457-0515	20	2	1005-731-0800	23	20
1005-457-0520	20	7	1005-731-0804	23	14
1005-457-0521	20	3	1005-731-0815	24	2
1005-457-0522	18	6	1005-731-0816	24	6
1005-457-0523	18	5	1005-731-0820	22	5
1005-457-0524	20	12	1005-731-0821	23	7
1005-457-0525	17	1	1005-731-0857	23	6
1005-457-0526	17	4	1005-731-0868	22	8
1005-457-0527	19	14	1005-731-0869	22	7
1005-457-0528	19	10	1005-731-0870	21	1
1005-457-0529	20	5	1005-731-0871	17	2
1005-457-0530	18	4		21	3
1005-457-0533	19	7	1005-731-0873	24	10
1005-457-0534	19	3	1005-731-0874	24	3
1005-457-0535	19	5	1005-737-0421	26	15
1005-457-0537	20	15	1005-737-0424	25	9
1005-457-0539	20	16	1005-806-1196	9	9
1005-457-0540	19	17	1005-831-2185	29	1
1005-512-7278	17	3	1005-831-2187	27	5
	20	14	1005-831-2188	27	6
	23	16	1005-831-2189	26	15
1005-532-3086	24	1	1005-831-2197	29	3

STOCK NUMBER	FIGURE NO.	ITEM NO.	STOCK NUMBER	FIGURE NO.	ITEM NO.
1005-831-2198	29	2	1005-887-8959	11	6
1005-831-2200	26	13	1005-887-8960	10	12
1005-831-2206	26	4	1005-887-8961	10	14
1005-831-2213	29	6	1005-887-8962	11	3
1005-831-2216	25	9	1005-887-8966	7	5
1005-831-2222	25	5	1005-887-8967	7	3
1005-831-2224	25	4	1005-887-8968	10	11
1005-831-2226	25	8	1005-887-8969	7	1
1005-831-2240	29	5	1005-887-8970	8	3
1005-831-2243	29	17	1005-887-8972	8	4
1005-831-2244	29	13	1005-887-8973	11	17
1005-831-2245	29	19	1005-887-8974	10	19
1005-831-2246	29	16	1005-887-8975	10	1
1005-831-2247	29	12	1005-887-8978	11	14
1005-831-2248	29	15	1005-887-8979	10	13
1005-831-2249	19	14	1005-887-8980	10	4
1005-831-2250	29	18	1005-887-8981	8	6
1005-874-8690	24	13	1005-955-5515	16	14
1005-874-8691	21	2	1005-970-8590	14	3
1005-874-8693	23	8	1005-970-8591	15	7
1005-874-8697	24	7	1005-970-8592	14	2
1005-874-8700	24	12	1005-970-8593	16	3
1005-874-8702	21	6	1005-970-8594	16	5
1005-875-9758	22	13	1005-970-8595	16	6
1005-887-5786	9	10	1005-970-8598	15	2
1005-887-5788	9	4	1005-970-8597	15	6
1005-887-5789	10	21	1005-970-8598	15	20
1005-887-5790	8	1	1005-970-8599	16	1
1005-887-5791	8	5	1005-970-8600	12	4
1005-887-5793	10	7	1005-970-8601	16	21
1005-887-5794	10	10	1005-970-8602	12	3
1005-887-5795	10	3	1005-970-8603	12	2
1005-887-5796	10	6	1005-970-8604	13	11
1005-887-5797	10	2	1005-970-8605	12	1
1005-887-5798	10	8	1005-970-8606	13	2
1005-887-5799	10	16	1005-970-8607	14	4
1005-887-5800	11	4	1005-970-8608	14	5
1005-887-5801	8	12	1005-970-8609	15	21
1005-887-5802	7	4	1005-970-8610	14	6
1005-887-5803	8	11	1005-970-8611	16	2
1005-887-5804	11	1	1005-970-8612	15	17
1005-887-5808	9	1	1005-970-8613	13	4
1005-887-5806	11	7	1005-970-8614	15	18
1005-887-5805	10	18	1005-970-8615	15	3
1005-887-5809	9	3	1005-970-8616	15	1
1005-887-5810	8	13	1005-970-8617	15	12
1005-887-8939	7	2	1005-970-8618	15	11
1005-887-8940	9	8	1005-970-8619	15	10
1005-887-8942	8	2	1005-970-8620	15	9
1005-887-8943	8	10	1005-970-8621	15	8
1005-887-8944	11	15	1005-970-8622	15	19
1005-887-8945	11	1	1005-970-8623	15	14
1005-887-8946	11	13	1005-970-8624	15	16
1005-887-8947	8	8	1005-970-8625	15	13
1005-887-8948	10	20	1005-970-8626	15	15
1005-887-8949	11	2	1005-970-8628	15	4
1005-887-8950	9	7	1005-970-8629	15	5
1005-887-8951	9	8	1005-970-8631	15	7
1005-887-8952	8	7	1005-970-8632	13	9
1005-887-8953	11	8	1005-970-8633	13	6
1005-887-8954	11	10	1005-970-8634	13	8
1005-887-8955	11	12	1005-970-8635	13	10
1005-887-8956	11	9	1005-970-8636	13	5
1005-887-8957	11	11	1005-970-8641	13	1
1005-887-8958	11	8	1005-970-8642	13	3

STOCK NUMBER	FIGURE NO.	ITEM NO.	REFERENCE NO.	MFG. CODE	FIGURE NO.	ITEM NO.
1005-970-8652	14	1	144US146	41758	19	9
1005-971-1581	16	18	144US147	41758	19	6
1005-971-1582	16	20	144US149	41758	20	9
1005-971-1583	16	19	144US150	41758	20	8
1005-971-1584	16	16	144US158	41758	20	4
1005-971-1585	16	17	144US171	41758	19	12
1005-971-1587	16	13	144US421	41758	18	7
1005-971-1588	16	7	144US422	41758	18	8
1005-971-1589	16	10	144US503	41758	19	1
1005-971-1590	16	9	144US564	41758	20	2
1005-971-1591	16	12	144US571	41758	20	7
1005-971-1592	16	11	144US574	41758	20	3
1005-972-0195	16	8	144US575	41758	18	6
1005-976-9236	22	3	144US576	41758	18	5
1005-983-0265	25	6	144US579	41758	20	12
1005-983-0270	10	9	144US580	41758	20	6
1005-983-0271	25	6	144US626	41758	20	1
4933-398-4108	32	...	144US632	41758	17	1
4933-398-4110	31	...	144US640	41758	18	2
5305-368-9663	21	4	144US643	41758	17	4
5305-404-7487	19	4	144US708	41758	19	14
5305-462-2982	19	13	144US1191	41758	19	10
5305-462-2983	20	10	144US1192	41758	20	5
5305-462-2988	19	9	144US2022	41758	18	4
5305-462-2990	19	6	144US2335	41758	19	5
5305-462-2992	20	4	144US2336	41758	19	7
5305-462-2993	20	1	144US2339	41758	19	4
5305-462-8638	19	12	144US2344	41758	19	3
5305-462-8639	19	1	144US2952	41758	19	2
5305-462-8641	19	2	144US2965	41758	19	8
5310-462-4786	19	8	144US3016	41758	20	15
5315-462-8640	20	6	144US3200	41758	20	16
5360-462-2991	20	9	144US3203	41758	19	17
5360-484-3657	18	2	170B	66118	27	5
			170C	66118	27	6
			230	50446	23	18
			232	50446	24	11
			233	50446	24	8
			251	50446	23	14
			252	50446	23	13
			252D	66118	14	3
			285CD	66118	13	6
			297	50446	22	8
			308	50446	24	2
			330	50446	23	19
			331	50446	23	2
			343	50446	17	3
				50446	20	14
					23	16
					23	22
			371	50446	23	4
			393	50446	21	4
			438	50446	23	7
			452D	66118	16	18
			491	50446	23	6
			492	50446	23	4
			493	50446	23	5
			499	50446	23	15
			552D	66118	16	20
			595	50446	23	21
			596	50446	24	13
			652D	66118	16	19
			752D	66118	16	16
			816	50446	21	2
			822	50446	23	9
			852D	66118	16	17

REFERENCE NO.	MFR CODE	FIGURE NO.	ITEM NO.	REFERENCE NO.	MFR CODE	FIGURE NO.	ITEM NO.
0001	66118	29	1	6052D	66118	15	16
1010	50446	21	1	6152CD	66118	15	13
1052D	66118	16	15	6252CD	66118	15	15
1152CD	66118	13	11	6270	66118	27	10
1252CD	66118	12	1	6452CD	66118	15	4
1352CD	66118	13	2	6552CD	66118	15	5
1452D	66118	14	2	6670	66118	27	8
1552CD	66118	14	4	6752D	66118	12	2
1652D	66118	14	5	6770	66118	27	9
1752CD	66118	15	21	6852D	66118	12	3
1852CD	66118	14	6	6970	66118	27	7
1952D	66118	16	3	7070	66118	26	4
2105	50446	24	6	7270	66118	26	2
2152D	66118	16	14	7470	66118	26	1
2170	66118	26	15	7570	66118	26	3
2252D	66118	16	13	7970A	66118	29	17
2270C	66118	26	15	7970B	66118	29	13
2352D	66118	16	7	7970C	66118	29	19
2452D	66118	16	10	7970D	66118	29	16
2470	66118	25	1	7970E	66118	29	12
2470A	66118	25	1	7970G	66118	29	15
2552CD	66118	15	17	7970H	66118	29	14
2570	66118	26	12	7970L	66118	29	18
2652CD	66118	13	7	7970M	66118	29	11
2752CD	66118	13	9	8070	66118	29	6
2770	66118	26	10	8170	66118	25	10
2870	66118	26	11	8270	66118	25	11
2952CD	66118	13	8	8370	66118	25	9
2970	66118	26	9	3770	66118	25	9
3052CD	66118	13	10	9070	66118	25	7
3070	66118	27	2	9112	66118	16	2
3152CD	66118	13	5	9370A	66118	25	6
3170	66118	27	3	9470	66118	25	3
3252CD	66118	13	1	9570	66118	29	8
3270	66118	27	4	9670	66118	29	7
3352CD	66118	13	3	9770	66118	29	9
3452CD	66118	13	4	9870	66118	25	5
3552D	66118	16	8	9970	66118	25	2
3652D	66118	16	6	10070	66118	25	4
3752D	66118	16	5	10170	66118	25	8
3852D	66118	16	9	10252C	66118	14	1
3952CD	66118	15	18	10570	66118	25	8
4052CD	66118	15	3	10670	66118	27	11
4152CD	66118	15	1	10970	66118	27	11
4252D	66118	15	2	11170	66118	26	6
4352D	66118	16	12	11270	66118	26	7
4452D	66118	16	11	11370	66118	26	8
4652D	66118	15	6	11370A	66118	26	5
4752CD	66118	14	7	11470	66118	28	7
4852D	66118	15	12	11570	66118	28	6
4952CD	66118	15	11	11670	66118	28	8
5052CD	66118	15	10	11870	66118	28	5
5070	66118	29	3	11970	66118	27	1
5151CD	66118	15	9	12070	66118	28	1
5170	66118	29	2	12170	66118	28	4
5252CD	66118	15	8	12270	66118	28	2
5352CD	66118	15	20	12370	66118	28	3
5432CD	66118	15	19	13970	66118	29	5
5570	66118	26	13	16113	50446	9	9
5652D	66118	16	1	16114	50446	9	10
5670	66118	26	13	16360	50446	23	8
5752D	66118	12	4	16781	50446	10	17
5852D	66118	16	21	16993	94055	9	2
5870	66118	26	14	17002	50446	9	4
5952CD	66118	15	14	17014	50446	10	21

REFERENCE NO.	MFR CODE	FIG. NO.	ITEM NO.	REFERENCE NO.	MFR. CODE	FIG. NO.	ITEM NO.
17018	50446	8	1	19787	50446	8	7
17022	50446	8	5	19792	50446	11	8
17038	50446	10	7	19793	50446	11	10
17040	50446	10	10	19794	50446	11	12
17042	50446	10	3	19795	50446	11	9
17043	50446	10	6	19796	50446	11	11
17044	50446	10	21	19797	50446	11	5
17047	50446	10	8	19798	50446	11	6
17053	50446	10	16	19809	50446	22	3
17055	50446	11	4	19921	50446	10	12
17569	50446	24	5	19927	50446	10	14
17571	50446	22	9	21305	50446	21	6
17573	50446	8	12	22016	50446	11	3
17577	50446	24	4	22036	50446	7	5
17580	50446	7	4	22037	50446	7	3
17667	50446	8	11	22045	50446	10	11
17810	50446	11	1	22535	50446	7	1
17922	50446	22	1	22545	50446	8	3
17934	50446	22	6	22550	50446	8	9
18457	94055	9	1	22555	50446	8	4
18460	94055	7	2	22560	50446	24	3
18845	50446	9	8	22580	50446	11	17
18870	50446	11	7	22760	50446	10	19
19461	50446	10	18	22765	50446	10	1
19474	50446	24	7	22820	50446	22	13
19636	50446	24	12	23220	50446	11	14
19766	50446	9	3	23221	50446	10	13
19767	50446	9	5	23222	50446	10	4
19770	50446	8	2	23321	50446	8	6
19771	50446	8	10	24475	50446	10	9
19772	50446	8	13	24476	50446	10	5
19774	50446	11	15	24477	50446	10	15
19775	50446	11	16	25410	50446	24	1
19776	50446	11	13	26465	50446	22	7
19781	50446	8	8	116993	94055	9	2
19782	50446	10	20	6544058	19204	30	...
19783	50446	11	2	7319954	19205	32	...
19785	50446	9	7	7319963	19205	31	...
19786	50446	9	6				

By Order of the Secretary of the Army:

Official:

**W. C. WESTMORELAND,
General, United States Army,
Chief of Staff.**

**VERNE L. BOWERS,
Major General, United States Army,
The Adjutant General.**

DISTRIBUTION:

To be distributed in accordance with DA Form 12-40 (qty rqr block #144) organizational maintenance requirements for all commercial rifles.

*U S. GOVERNMENT PRINTING OFFICE: 1993 - 342-421/80239

RECOMMENDED CHANGES TO EQUIPMENT TECHNICAL PUBLICATIONS



THEN... JOT DOWN THE DOPE ABOUT IT ON THIS FORM, CAREFULLY TEAR IT OUT, FOLD IT AND DROP IT IN THE MAIL!

SOMETHING WRONG WITH THIS PUBLICATION?

FROM: (PRINT YOUR UNIT'S COMPLETE ADDRESS)

DATE SENT

PUBLICATION NUMBER

PUBLICATION DATE

PUBLICATION TITLE

BE EXACT... PIN-POINT WHERE IT IS

IN THIS SPACE TELL WHAT IS WRONG AND WHAT SHOULD BE DONE ABOUT IT:

PAGE NO.	PARA-GRAPH	FIGURE NO.	TABLE NO.
----------	------------	------------	-----------

TEAR ALONG PERFORATED LINE

PRINTED NAME, GRADE OR TITLE, AND TELEPHONE NUMBER

SIGN HERE:

DA FORM 2028-2 JUL 79

PREVIOUS EDITIONS ARE OBSOLETE.

P.S.—IF YOUR OUTFIT WANTS TO KNOW ABOUT YOUR RECOMMENDATION MAKE A CARBON COPY OF THIS AND GIVE IT TO YOUR HEADQUARTERS.

